

Product datasheet for **TA328447**

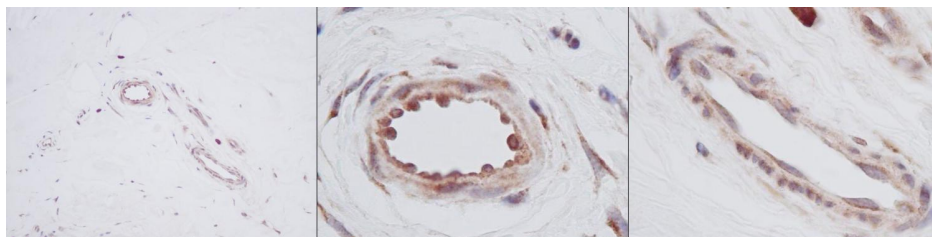
TGF alpha (TGFA) Rabbit Polyclonal Antibody

Product data:

Product Type:	Primary Antibodies
Applications:	IHC
Recommended Dilution:	WB: 0.1-0.2ug/mL, ELISA: 0.25-2ug/mL, IHC: 0.25ug/mL - 1mg/mL
Reactivity:	Human
Host:	Rabbit
Isotype:	IgG
Clonality:	Polyclonal
Immunogen:	E.coli derived Recombinant Human TGF- α
Formulation:	A sterile filtered antibody solution was lyophilized from PBS, pH 7.2.
Purification:	Produced from sera of rabbits pre-immunized with highly pure recombinant Human TGF-alpha. Anti-Human TGF-alpha specific antibody was purified by affinity chromatography employing immobilized Human TGF-alpha matrix.
Conjugation:	Unconjugated
Storage:	Store at -20°C as received.
Stability:	Stable for 12 months from date of receipt.
Gene Name:	transforming growth factor alpha
Database Link:	NP_003227 Entrez Gene 7039 Human P01135
Synonyms:	TFGA
Note:	Neutralization: To yield one-half maximal inhibition [ND50] of the biological activity of Human TGF-alpha (0.5 ng/ml), a concentration of 2.5-3.7 \leq ug/ml of this antibody is required.
Protein Families:	Druggable Genome, Secreted Protein, Transmembrane
Protein Pathways:	ErbB signaling pathway, Glioma, Non-small cell lung cancer, Pancreatic cancer, Pathways in cancer, Prostate cancer, Renal cell carcinoma



[View online »](#)

Product images:

This antibody stained formalin-fixed, paraffin-embedded sections of human breast invasive ductal carcinoma. The recommended concentration is 0.5 ug/ml with a two-hour incubation at room temperature. An HRP-labeled polymer detection system was used with a DAB chromogen. Heat induced antigen retrieval with a pH 6.0 Sodium Citrate buffer is recommended. Optimal concentrations and conditions may vary.