

Product datasheet for **TA328361**

KGF (FGF7) Rabbit Polyclonal Antibody

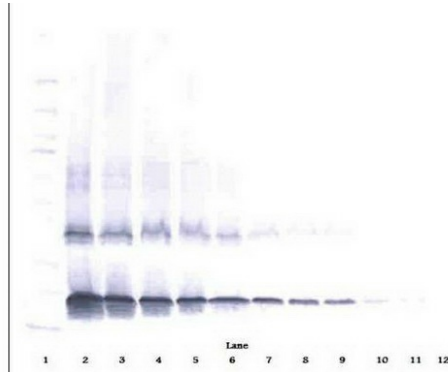
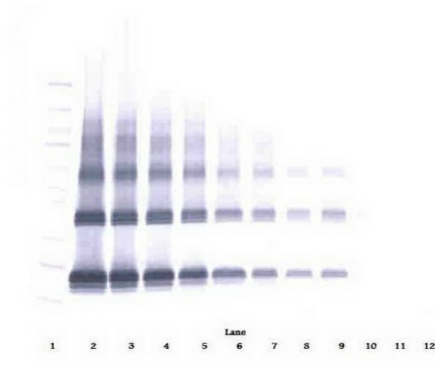
Product data:

Product Type:	Primary Antibodies
Applications:	ELISA, IHC, WB
Recommended Dilution:	WB: 0.1-0.2ug/mL, ELISA: 0.25-2ug/mL, IHC: 0.25ug/mL - 1mg/mL
Reactivity:	Human
Host:	Rabbit
Isotype:	IgG
Clonality:	Polyclonal
Immunogen:	E.coli derived Recombinant Human KGF (FGF-7)
Formulation:	A sterile filtered antibody solution was lyophilized from PBS, pH 7.2.
Purification:	Produced from sera of rabbits pre-immunized with highly pure (>98%) recombinant hKGF. Anti-Human KGF specific antibody was purified by affinity chromatography employing immobilized hKGF matrix.
Conjugation:	Unconjugated
Storage:	Store at -20°C as received.
Stability:	Stable for 12 months from date of receipt.
Gene Name:	fibroblast growth factor 7
Database Link:	NP_002000 Entrez Gene 2252 Human P21781
Synonyms:	HBGF-7; KGF
Note:	Neutralization: To yield one-half maximal inhibition [ND50]of the biological activity of hKGF (25 ng/ml), a concentration of 0.56-0.85 <=ug/ml of this antibody is required.
Protein Families:	Adult stem cells, Druggable Genome, Embryonic stem cells, ES Cell Differentiation/IPS, Secreted Protein
Protein Pathways:	MAPK signaling pathway, Melanoma, Pathways in cancer, Regulation of actin cytoskeleton

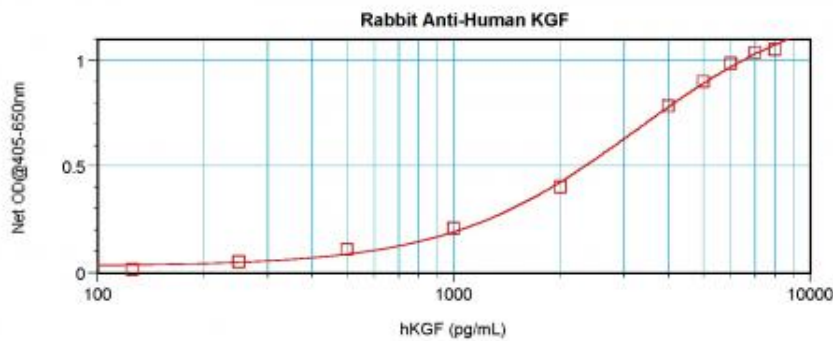


[View online »](#)

Product images:



To detect hKGF by sandwich ELISA (using 100 ul/well antibody solution) a concentration of 0.5 - 2.0 ug/ml of this antibody is required. This antigen affinity purified antibody, in conjunction with Biotinylated Anti-Human KGF ([TA328360]) as a detection antibody, allows the detection of at least 0.2 - 0.4 ng/well of recombinant hKGF.



To detect hKGF by sandwich ELISA (using 100 ul/well antibody solution) a concentration of 0.5 - 2.0 ug/ml of this antibody is required. This antigen affinity purified antibody, in conjunction with Biotinylated Anti-Human KGF ([TA328360]) as a detection antibody, allows the detection of at least 0.2 - 0.4 ng/well of recombinant hKGF.



To detect hKGF by sandwich ELISA (using 100 ul/well antibody solution) a concentration of 0.5 - 2.0 ug/ml of this antibody is required. This antigen affinity purified antibody, in conjunction with Biotinylated Anti-Human KGF ([TA328360]) as a detection antibody, allows the detection of at least 0.2 - 0.4 ng/well of recombinant hKGF.