

## Product datasheet for **TA328328**

### GM CSF (CSF2) Rabbit Polyclonal Antibody

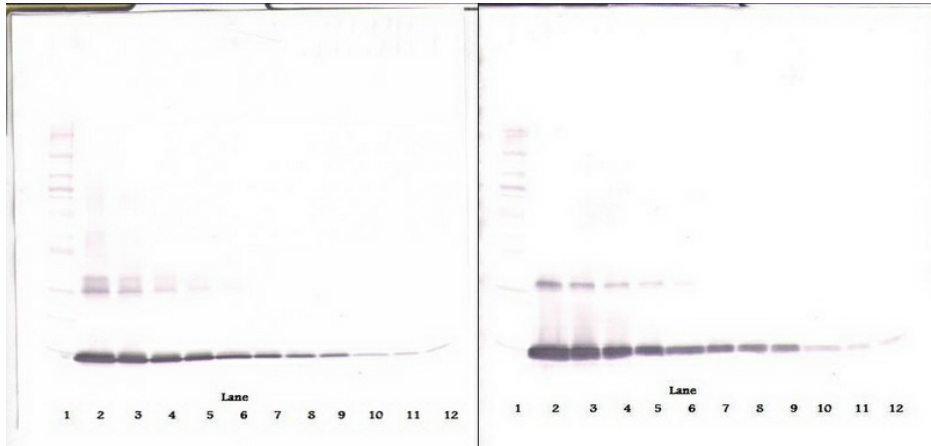
#### Product data:

Product Type:	Primary Antibodies
Applications:	ELISA, IHC, WB
Recommended Dilution:	WB: 0.1-0.2ug/mL, ELISA: 0.25-2ug/mL, IHC: 0.25ug/mL - 1mg/mL
Reactivity:	Human
Host:	Rabbit
Isotype:	IgG
Clonality:	Polyclonal
Immunogen:	E.coli derived Recombinant Human GM-CSF
Formulation:	A sterile filtered antibody solution was lyophilized from PBS, pH 7.2.
Purification:	Produced from sera of rabbits pre-immunized with highly pure (>98%) recombinant hGM-CSF. Anti-Human GM-CSF specific antibody was purified by affinity chromatography employing immobilized hGM-CSF matrix.
Conjugation:	Unconjugated
Storage:	Store at -20°C as received.
Stability:	Stable for 12 months from date of receipt.
Gene Name:	colony stimulating factor 2
Database Link:	<a href="#">NP_000749</a> <a href="#">Entrez Gene 1437 Human</a> <a href="#">P04141</a>
Synonyms:	GMCSF
Note:	Neutralization: To yield one-half maximal inhibition [ND50] of the biological activity of hGM-CSF (1.0 ng/ml), a concentration of 0.13-0.20 <=ug/ml of this antibody is required.
Protein Families:	Druggable Genome, ES Cell Differentiation/IPS, Secreted Protein
Protein Pathways:	Cytokine-cytokine receptor interaction, Fc epsilon RI signaling pathway, Hematopoietic cell lineage, Jak-STAT signaling pathway, Natural killer cell mediated cytotoxicity, T cell receptor signaling pathway

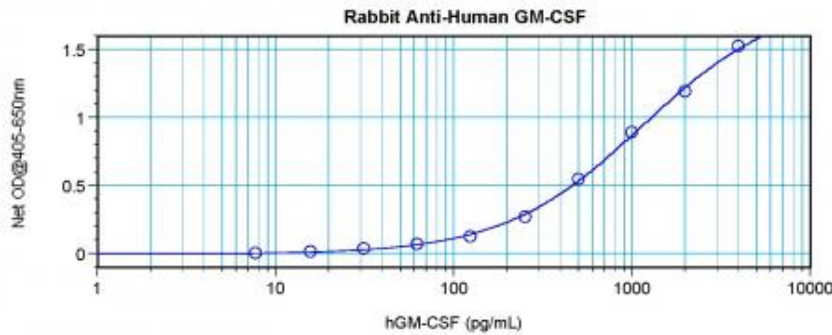


[View online »](#)

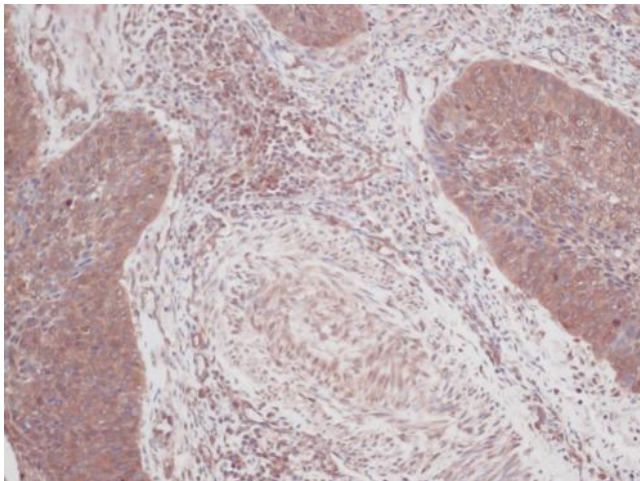
**Product images:**



To detect hGM-CSF by sandwich ELISA (using 100 ul/well antibody solution) a concentration of 0.5 - 2.0 ug/ml of this antibody is required. This antigen affinity purified antibody, in conjunction with Biotinylated Anti-Human GM-CSF ([TA328327]) as a detection antibody, allows the detection of at least 0.2 - 0.4 ng/well of recombinant hGM-CSF.



To detect hGM-CSF by sandwich ELISA (using 100 ul/well antibody solution) a concentration of 0.5 - 2.0 ug/ml of this antibody is required. This antigen affinity purified antibody, in conjunction with Biotinylated Anti-Human GM-CSF ([TA328327]) as a detection antibody, allows the detection of at least 0.2 - 0.4 ng/well of recombinant hGM-CSF.



To detect hGM-CSF by sandwich ELISA (using 100 ul/well antibody solution) a concentration of 0.5 - 2.0 ug/ml of this antibody is required. This antigen affinity purified antibody, in conjunction with Biotinylated Anti-Human GM-CSF ([TA328327]) as a detection antibody, allows the detection of at least 0.2 - 0.4 ng/well of recombinant hGM-CSF.