

Product datasheet for **TA328286**

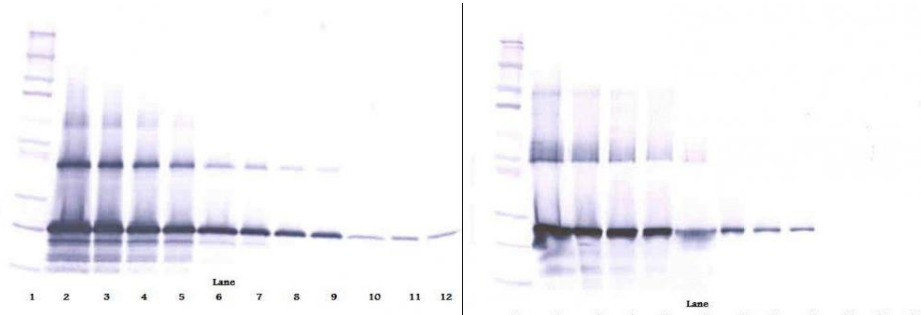
CCN5 Rabbit Polyclonal Antibody

Product data:

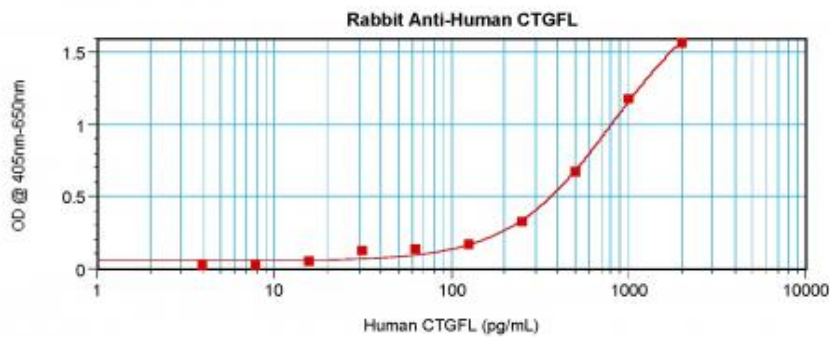
Product Type:	Primary Antibodies
Applications:	ELISA, WB
Recommended Dilution:	WB: 0.1-0.2ug/mL, ELISA: 0.25-2ug/mL, IHC: 0.25ug/mL - 1mg/mL
Reactivity:	Human
Host:	Rabbit
Isotype:	IgG
Clonality:	Polyclonal
Immunogen:	E.coli derived Recombinant Human CTGFL/WISP-2
Formulation:	A sterile filtered antibody solution was lyophilized from PBS, pH 7.2.
Purification:	Produced from sera of rabbits pre-immunized with highly pure (>98%) recombinant hCTGFL/WISP-2. Anti-Human CTGFL/WISP-2 specific antibody was purified by affinity chromatography employing immobilized hCTGFL/WISP-2 matrix.
Conjugation:	Unconjugated
Storage:	Store at -20°C as received.
Stability:	Stable for 12 months from date of receipt.
Gene Name:	WNT1 inducible signaling pathway protein 2
Database Link:	NP_003872 Entrez Gene 8839 Human O76076
Synonyms:	CCN5; CT58; CTGF-L
Protein Families:	Druggable Genome, ES Cell Differentiation/IPS, Secreted Protein



[View online »](#)

Product images:


To detect hCTGFL/WISP-2 by sandwich ELISA (using 100 ul/well antibody solution) a concentration of 0.5 - 2.0 ug/ml of this antibody is required. This antigen affinity purified antibody, in conjunction with Biotinylated Anti-Human CTGFL/WISP-2 ([TA328285]) as a detection antibody, allows the detection of at least 0.2 - 0.4 ng/well of recombinant hCTGFL/WISP-2.



To detect hCTGFL/WISP-2 by sandwich ELISA (using 100 ul/well antibody solution) a concentration of 0.5 - 2.0 ug/ml of this antibody is required. This antigen affinity purified antibody, in conjunction with Biotinylated Anti-Human CTGFL/WISP-2 ([TA328285]) as a detection antibody, allows the detection of at least 0.2 - 0.4 ng/well of recombinant hCTGFL/WISP-2.