

Product datasheet for **TA328243**

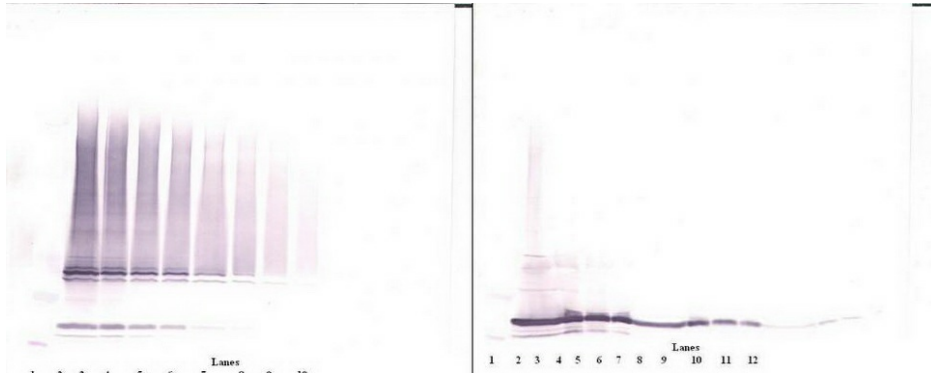
IL17F Rabbit Polyclonal Antibody

Product data:

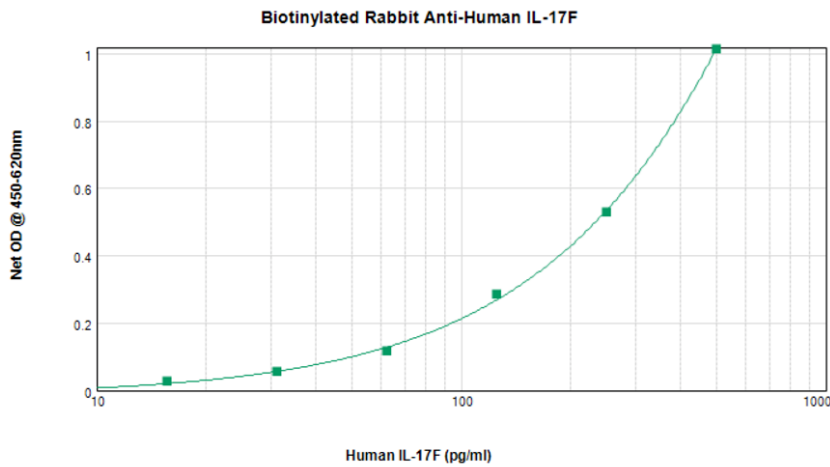
Product Type:	Primary Antibodies
Applications:	ELISA, WB
Recommended Dilution:	ELISA: 0.25 - 2 ug/ml WB: 0.1 - 0.2 ug/ml
Reactivity:	Human
Host:	Rabbit
Isotype:	IgG
Clonality:	Polyclonal
Immunogen:	E.coli derived Recombinant Human IL-17F
Formulation:	A sterile filtered antibody solution was lyophilized from PBS, pH 7.2.
Purification:	Produced from sera of rabbits pre-immunized with highly pure (>98%) recombinant hIL-17F. Anti-Human IL-17F specific antibody was purified by affinity chromatography employing immobilized hIL-17F matrix.
Conjugation:	Unconjugated
Storage:	Store at -20°C as received.
Stability:	Stable for 12 months from date of receipt.
Gene Name:	interleukin 17F
Database Link:	NP_443104 Entrez Gene 112744 Human Q96PD4
Synonyms:	CANDF6; IL-17F; ML-1; ML1
Note:	Neutralization: To yield one-half maximal inhibition [ND50] of the biological activity of hIL-17F (50.0 ng/ml), a concentration of 0.9-1.2 ug/ml of this antibody is required.
Protein Families:	Druggable Genome, Secreted Protein



[View online »](#)

Product images:


To detect hIL-17F by Western Blot analysis this antibody can be used at a concentration of 0.1 - 0.2 µg/ml. Used in conjunction with compatible secondary reagents the detection limit for recombinant hIL-17F is 1.5 - 3.0 ng/lane, under either reducing or non-reducing conditions.



To detect hIL-17F by sandwich ELISA (using 100 µl/well antibody solution) a concentration of 0.25 - 1.0 µg/ml of this antibody is required. The biotinylated polyclonal antibody ([TA328242]) in conjunction with the unconjugated polyclonal Anti-Human IL-17F (TA328243) as a capture antibody, allows the detection of at least 0.2 - 0.4 ng/well of recombinant hIL-17F.