

## Product datasheet for **TA328042**

### **TUBA6 (TUBA1C) Mouse Monoclonal Antibody [Clone ID: 10D8]**

#### **Product data:**

Product Type:	Primary Antibodies
Clone Name:	10D8
Applications:	WB
Recommended Dilution:	WB, IF
Reactivity:	Human, Mouse, Rat, All Species
Host:	Mouse
Isotype:	IgM, kappa
Clonality:	Monoclonal
Immunogen:	Recombinant full length human $\alpha$ -tubulin
Formulation:	This antibody is provided in phosphate-buffered solution, pH 7.4, containing 0.09% sodium azide at 0.5 mg/ml.
Concentration:	lot specific
Purification:	This antibody is at >85% purity.
Conjugation:	Unconjugated
Storage:	Store at -20°C as received.
Stability:	Stable for 12 months from date of receipt.
Predicted Protein Size:	50-55 kD
Gene Name:	tubulin alpha 1c
Database Link:	<a href="#">NP_116093</a> <a href="#">Entrez Gene 22146 Mouse</a> <a href="#">Entrez Gene 300218 Rat</a> <a href="#">Entrez Gene 84790 Human</a> <a href="#">Q9BQE3</a>



[View online »](#)

**Background:**

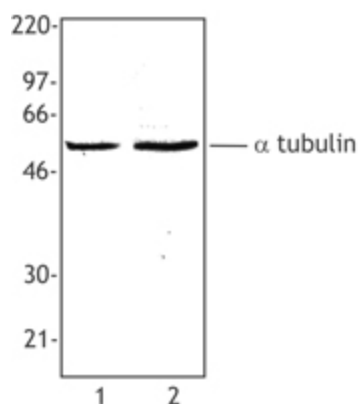
Tubulin, one of the major constituents of microtubules, is a dimeric protein consisting of an alpha and beta chain. Tubulin is a highly conserved protein that is ubiquitously expressed. Tubulin is a GTP-binding protein that can be modified by phosphorylation and acetylation. Tubulin interacts with a variety of proteins including RAC GTPase activating protein 1, ZAP70, Polo-like kinase, c-Myc, Fyn, and microtubule associated protein 1A. The 10D8 antibody recognizes  $\alpha$ -tubulin in all species and is useful for Western blotting, and immunofluorescence staining. The 10D8 antibody can also be used to monitor protein loading in Western blotting.

**Synonyms:**

bcm948; TUBA6

**Protein Pathways:**

Gap junction, Pathogenic Escherichia coli infection

**Product images:**

Hela cell extract (Lane 1) or NIH3T3 cell extract (Lane 2) was resolved by electrophoresis, transferred to nitrocellulose and probed with monoclonal anti- $\alpha$ -tubulin (Clone 10D8) antibody. Proteins were visualized using a goat anti-mouse secondary conjugated to HRP and a chemiluminescence detection system.