

Product datasheet for **TA327710**

smooth muscle Myosin heavy chain 11 (MYH11) Mouse Monoclonal Antibody [Clone ID: SMMS-1]

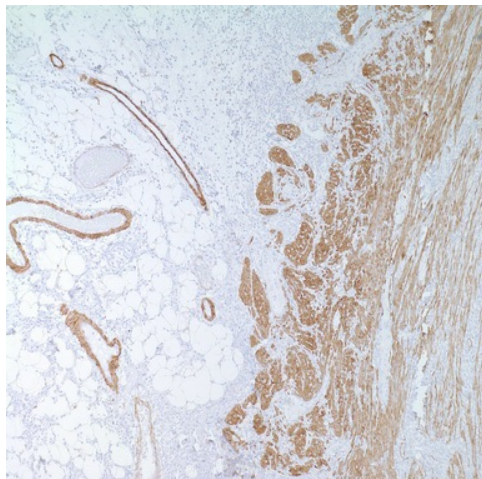
Product data:

Product Type:	Primary Antibodies
Clone Name:	SMMS-1
Applications:	IHC
Recommended Dilution:	IHC: 1:100 - 1:500
Reactivity:	Human
Host:	Mouse
Isotype:	IgG1, kappa
Clonality:	Monoclonal
Formulation:	This antibody is supplied as cell culture supernatant diluted in tris buffered saline, pH 7.3-7.7, with 1% BSA and <0.1% sodium azide.
Conjugation:	Unconjugated
Storage:	Store at -20°C as received.
Stability:	Stable for 12 months from date of receipt.
Gene Name:	myosin, heavy chain 11, smooth muscle
Database Link:	NP_001035202 Entrez Gene 4629 Human P35749
Synonyms:	AAT4; FAA4; SMHC; SMMHC
Note:	Smooth Muscle Myosin, heavy chain (SMMS-1) is a cytoplasmic structural protein that is a major component of the contractile apparatus of the smooth muscle cells. SMMS-1 is also a myoepithelium-associated protein. Anti-SMMS-1 is a mouse monoclonal antibody to smooth muscle myosin, heavy chain that reacts with human visceral and vascular smooth muscle cells. The antibody also reacts with human myoepithelial cells. It is very helpful in distinguishing between benign sclerosing breast lesions and infiltrating carcinomas in difficult cases since it strongly stains the myoepithelial layer in the benign lesions while it is negative in the infiltrating carcinomas.
Protein Pathways:	Tight junction, Vascular smooth muscle contraction, Viral myocarditis



[View online »](#)

Product images:



Immunohistochemistry staining of Paraffin Breast tissue by Myosin, Smooth Muscle antibody (dilution: 1:100 - 1:500; visualization of staining: Cytoplasmic)