

Product datasheet for **TA327700**

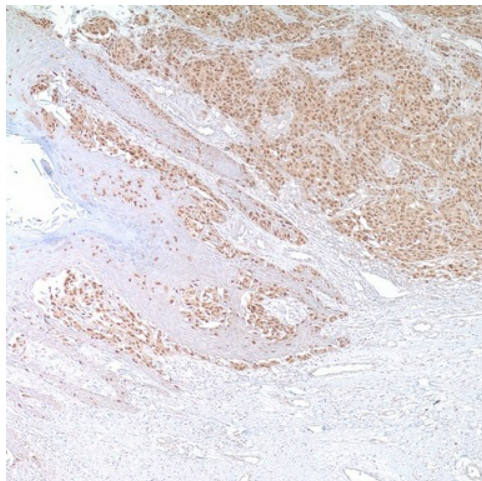
MITF Mouse Monoclonal Antibody [Clone ID: C5/D5]

Product data:

Product Type:	Primary Antibodies
Clone Name:	C5/D5
Applications:	IHC
Recommended Dilution:	IHC: 1:100 - 1:500
Reactivity:	Human
Host:	Mouse
Isotype:	IgG1
Clonality:	Monoclonal
Formulation:	This antibody is supplied as cell culture supernatant diluted in tris buffered saline, pH 7.3-7.7, with 1% BSA and <0.1% sodium azide.
Conjugation:	Unconjugated
Storage:	Store at -20°C as received.
Stability:	Stable for 12 months from date of receipt.
Gene Name:	melanogenesis associated transcription factor
Database Link:	NP_000239 Entrez Gene 4286 Human O75030
Synonyms:	bHLHe32; CMM8; MI; WS2; WS2A
Note:	Microphthalmia (MITF) is a transcription factor implicated in pigmentation, bone development, and in mast cells. Various forms of MITF exist ranging from 50 -70 kD in size. This antibody targets the 52 - 56 kD range and has been useful in identifying malignant melanoma and distinguishing mast cell lesions from lesions of myeloid derivation. A relatively rare class of tumors known as PEComas (tumors showing perivascular epithelioid cell differentiation) express MITF in a high percentage of cases (~90%).
Protein Families:	Druggable Genome, Transcription Factors
Protein Pathways:	Melanogenesis, Melanoma, Pathways in cancer



[View online »](#)

Product images:

Immunohistochemistry staining of Paraffin
Melanoma tissue by MITF antibody (dilution:
1:100 - 1:500; visualization of staining: Nuclear)