

Product datasheet for **TA327603**

ACTH (POMC) Rabbit Polyclonal Antibody

Product data:

Product Type:	Primary Antibodies
Applications:	IHC
Recommended Dilution:	IHC: 1:100 - 1:500
Reactivity:	Human
Host:	Rabbit
Clonality:	Polyclonal
Formulation:	This antibody is supplied as cell culture supernatant diluted in tris buffered saline, pH 7.3-7.7, with 1% BSA and <0.1% sodium azide.
Conjugation:	Unconjugated
Storage:	Store at -20°C as received.
Stability:	Stable for 12 months from date of receipt.
Gene Name:	proopiomelanocortin
Database Link:	NP_000930 Entrez Gene 5443 Human P01189
Synonyms:	ACTH; CLIP; LPH; MSH; NPP; POC
Note:	ACTH is synthesized from pre-pro-opiomelanocortin (pre-POMC). The removal of the single peptide during translation produces the 267 amino acid polypeptide POMC, which undergoes a series of post-translational modifications such as phosphorylation and glycosylation before it is proteolytically cleaved by endopeptidases to yield various polypeptide fragments with varying physiological activity. These fragments include ACTH, β -lipotropin, γ -lipotropin, Melanocyte Stimulating Hormone (MSH), and β -endorphin. POMC, ACTH, and β -lipotropin are secreted from corticotropes in the anterior lobe (or adenohypophysis) of the pituitary gland in response to the hormone corticotropin-releasing hormone (CRH) released by the hypothalamus. ACTH is also produced by cells of immune system (T-cells, B-cells, and macrophages) in response to stimuli associated with stress. Anti-ACTH is a useful marker in classification of pituitary tumors and the study of pituitary disease. It reacts with ACTH-producing cells (corticotrophs). It also may react with other tumors (e.g. some small cell carcinomas of the lung) causing paraneoplastic syndromes by secreting ACTH.

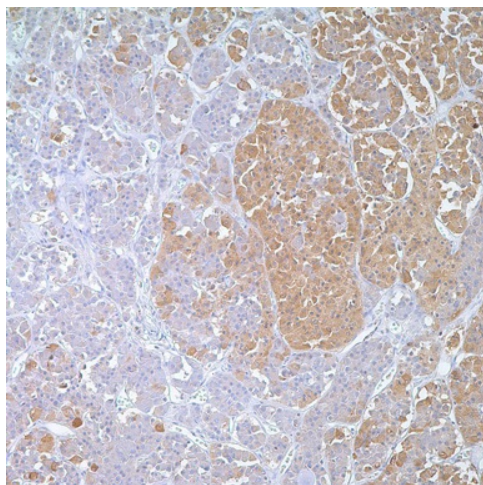


[View online »](#)

Protein Families: Druggable Genome

Protein Pathways: Adipocytokine signaling pathway, Melanogenesis

Product images:



Immunohistochemistry staining of Paraffin Pituitary tissue by ACTH antibody (dilution: 1:100 - 1:500; visualization of staining: Cytoplasmic)