

## Product datasheet for **TA327602**

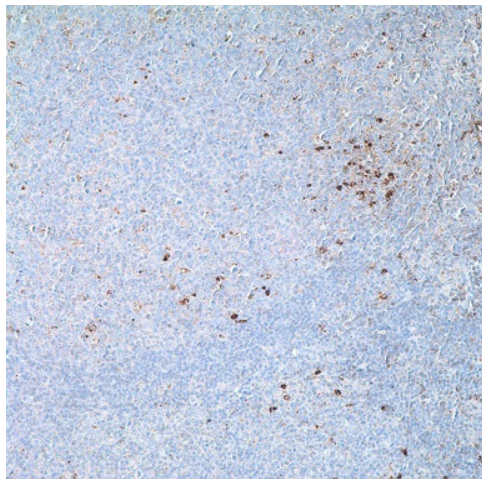
### alpha 1 Antitrypsin (SERPINA1) Rabbit Polyclonal Antibody

#### Product data:

Product Type:	Primary Antibodies
Applications:	IHC
Recommended Dilution:	IHC: 1:500 - 1:2000
Reactivity:	Human
Host:	Rabbit
Clonality:	Polyclonal
Formulation:	This antibody is supplied as cell culture supernatant diluted in tris buffered saline, pH 7.3-7.7, with 1% BSA and <0.1% sodium azide.
Conjugation:	Unconjugated
Storage:	Store at -20°C as received.
Stability:	Stable for 12 months from date of receipt.
Gene Name:	serpin family A member 1
Database Link:	<a href="#">NP_000286</a> <a href="#">Entrez Gene 5265 Human P01009</a>
Synonyms:	A1A; A1AT; AAT; alpha1AT; PI; PI1; PRO2275
Note:	The immunohistochemical staining of alpha-1-antitrypsin is considered to be very useful in the study of inherited AAT deficiency, benign and malignant hepatic tumors, and yolk sac carcinomas. Positive staining for A-1-antitrypsin may also be used in detection of benign and malignant lesions of an histiocytic nature. Sensitivity and specificity of the results have made this antibody a useful tool in the screening of patients with cryptogenic cirrhosis or other forms of liver disease with portal fibrosis of uncertain etiology.
Protein Families:	Druggable Genome, ES Cell Differentiation/IPS, Secreted Protein
Protein Pathways:	Complement and coagulation cascades



[View online »](#)

**Product images:**

Immunohistochemistry staining of Paraffin Tonsil tissue by A-1 Antitrypsin antibody (dilution: 1:500 - 1:2000; visualization of staining: Cytoplasmic)