

Product datasheet for **TA327599**

RAC1 Rabbit Polyclonal Antibody

Product data:

Product Type:	Primary Antibodies
Applications:	WB
Recommended Dilution:	WB: 1:500-1:1000
Reactivity:	Human, Mouse, Rat
Host:	Rabbit
Isotype:	IgG
Clonality:	Polyclonal
Immunogen:	A phospho specific peptide corresponding to residues surrounding S71 of human RAC1
Formulation:	Store at -20C or -80C. Avoid freeze / thaw cycles. Buffer: PBS with 0.02% sodium azide, 50% glycerol, pH7.3
Concentration:	lot specific
Purification:	Affinity purification
Conjugation:	Unconjugated
Storage:	Store at -20°C as received.
Stability:	Stable for 12 months from date of receipt.
Gene Name:	ras-related C3 botulinum toxin substrate 1 (rho family, small GTP binding protein Rac1)
Database Link:	NP_008839 Entrez Gene 19353 Mouse Entrez Gene 363875 Rat Entrez Gene 5879 Human P63000



[View online »](#)

Background:

Rac and Cdc42 are members of the Rho-GTPase family. In mammals, Rac exists as three isoforms, Rac1, Rac2 and Rac3, which are highly similar in sequence. Rac1 and Cdc42, the most widely studied of this group, are ubiquitously expressed. Rac2 is expressed in cells of hematopoietic origin, and Rac3, while highly expressed in brain, is also found in many other tissues. Rac and Cdc42 play key signaling roles in cytoskeletal reorganization, membrane trafficking, transcriptional regulation, cell growth and development. GTP binding stimulates the activity of Rac/Cdc42, and the hydrolysis of GTP to GDP through the proteins intrinsic GTPase activity, rendering it inactive. GTP hydrolysis is aided by GTPase activating proteins (GAPs), while exchange of GDP for GTP is facilitated by guanine nucleotide exchange factors (GEFs). Another level of regulation is achieved through the binding of RhoGDI, a guanine nucleotide dissociation inhibitor, which retains Rho family GTPases, including Rac and Cdc42, in their inactive GDP-bound state.

Synonyms:

MIG5; p21-Rac1; Rac-1; TC-25

Note:

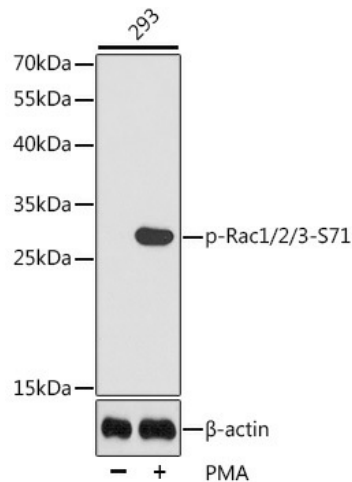
phospho

Protein Families:

Druggable Genome

Protein Pathways:

Adherens junction, Amyotrophic lateral sclerosis (ALS), Axon guidance, B cell receptor signaling pathway, Chemokine signaling pathway, Colorectal cancer, Epithelial cell signaling in Helicobacter pylori infection, Fc epsilon RI signaling pathway, Fc gamma R-mediated phagocytosis, Focal adhesion, Leukocyte transendothelial migration, MAPK signaling pathway, Natural killer cell mediated cytotoxicity, Neurotrophin signaling pathway, Pancreatic cancer, Pathways in cancer, Regulation of actin cytoskeleton, Renal cell carcinoma, Toll-like receptor signaling pathway, VEGF signaling pathway, Viral myocarditis, Wnt signaling pathway

Product images:

Western blot analysis of extracts from 293 cells, using Phospho-Rac1/2/3-S71 antibody (TA327599). | Secondary antibody: HRP Goat Anti-Rabbit IgG (H+L) at 1:10000 dilution. | Lysates/proteins: 25ug per lane. | Blocking buffer: 3% BSA.