

Product datasheet for **TA327273**

Pyrophosphatase 1 (PPA1) Rabbit Polyclonal Antibody

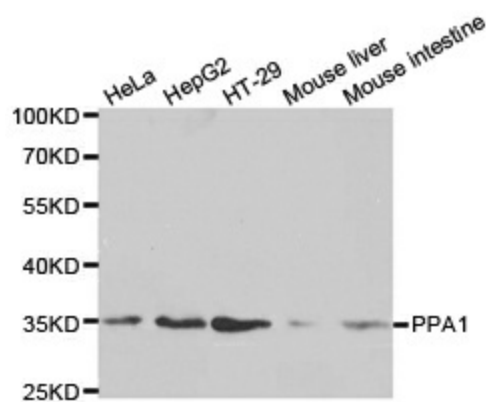
Product data:

Product Type:	Primary Antibodies
Applications:	WB
Recommended Dilution:	WB: 1:500-1:2000
Reactivity:	Human, Mouse, Rat
Host:	Rabbit
Isotype:	IgG
Clonality:	Polyclonal
Immunogen:	Recombinant protein of human PPA1
Formulation:	Store at -20C or -80C. Avoid freeze / thaw cycles. Buffer: PBS with 0.02% sodium azide, 50% glycerol, pH7.3
Concentration:	lot specific
Purification:	Affinity purification
Conjugation:	Unconjugated
Storage:	Store at -20°C as received.
Stability:	Stable for 12 months from date of receipt.
Gene Name:	pyrophosphatase (inorganic) 1
Database Link:	NP_066952 Entrez Gene 67895 Mouse Entrez Gene 294504 Rat Entrez Gene 5464 Human Q15181
Background:	PPA1(Inorganic pyrophosphatase) is also named as IOPPP, PP and PPase. It maintains the thermodynamic favorability of these reactions by catalyzing the hydrolysis of pyrophosphates into organic phosphates, which are then exported across the cell membrane(PMID:16300924).The erythrocyte inorganic pyrophosphatase molecule would appear to be a dimer(PMID:4130389).This antibody is specific to PPA1.
Synonyms:	HEL-S-66p; IOPPP; PP; PP1; SID6-8061
Protein Families:	ES Cell Differentiation/IPS
Protein Pathways:	Oxidative phosphorylation



[View online »](#)

Product images:



Western blot analysis of extracts of various cell lines, using PPA1 antibody.