

## Product datasheet for **TA327188**

### PSAP Rabbit Polyclonal Antibody

#### Product data:

|                       |   |
|-----------------------|---|
| Product Type:         | Primary Antibodies  |
| Applications:         | ICC/IF, IHC, WB   |
| Recommended Dilution: | WB 1:500 - 1:2000;IF 1:50- 1:200  |
| Reactivity:           | Human, Mouse, Rat   |
| Host:                 | Rabbit  |
| Isotype:              | IgG   |
| Clonality:            | Polyclonal  |
| Immunogen:            | Recombinant protein of human PSAP   |
| Formulation:          | Store at -20C or -80C. Avoid freeze / thaw cycles. Buffer: PBS with 0.02% sodium azide, 50% glycerol, pH7.3   |
| Concentration:        | lot specific  |
| Purification:         | Affinity purification   |
| Conjugation:          | Unconjugated  |
| Storage:              | Store at -20°C as received.   |
| Stability:            | Stable for 12 months from date of receipt.  |
| Gene Name:            | prosaposin  |
| Database Link:        | <a href="#">NP_002769</a><br><a href="#">Entrez Gene 19156 Mouse</a> <a href="#">Entrez Gene 25524 Rat</a> <a href="#">Entrez Gene 5660 Human</a><br><a href="#">P07602</a> |



[View online »](#)

**Background:**

The PSAP gene encodes prosaposin, a precursor of four small nonenzymatic glycoproteins termed sphingolipid activator proteins (SAPs) that assist in the lysosomal hydrolysis of sphingolipids. After proteolytic processing of the presaposin protein, these 4 released polypeptides are functional activators. Saposin A is encoded by residues 60 to 143 of PSAP, saposin B by 195 to 275, saposin C by 311 to 390, and saposin D by 405 to 487. They are four 12-14 kDa heatstable glycoproteins. Saposins A-D localize primarily to the lysosomal compartment where they facilitate the catabolism of glycosphingolipids with short oligosaccharide groups. Saposins A-D are required for the hydrolysis of certain sphingolipids by specific lysosomal hydrolases. Defects in PSAP are the cause of Gaucher disease, Tay-Sachs disease, and metachromatic leukodystrophy. This PSAP antibody (10801-1-AP) is expected to recognize both saposin A and B.

**Synonyms:**

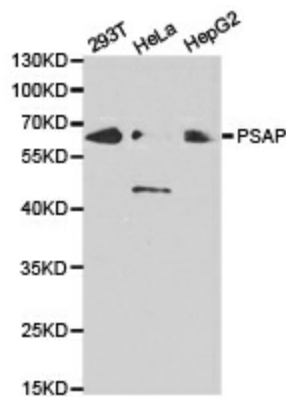
GLBA; SAP1

**Protein Families:**

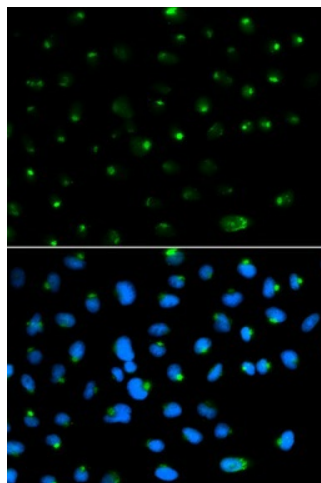
Druggable Genome

**Protein Pathways:**

Lysosome

**Product images:**

Western blot analysis of extracts of HEK-293 cell lines, using PSAP antibody.



Immunofluorescence analysis of MCF7 cell using PSAP antibody. Blue: DAPI for nuclear staining.