

Product datasheet for **TA327119**

CTNND1 Rabbit Polyclonal Antibody

Product data:

Product Type:	Primary Antibodies
Applications:	IHC, WB
Recommended Dilution:	WB 1:500 - 1:2000
Reactivity:	Human, Mouse, Rat
Host:	Rabbit
Isotype:	IgG
Clonality:	Polyclonal
Immunogen:	Recombinant protein of human CTNND1
Formulation:	Store at -20C or -80C. Avoid freeze / thaw cycles. Buffer: PBS with 0.02% sodium azide, 50% glycerol, pH7.3
Concentration:	lot specific
Purification:	Affinity purification
Conjugation:	Unconjugated
Storage:	Store at -20°C as received.
Stability:	Stable for 12 months from date of receipt.
Gene Name:	catenin delta 1
Database Link:	NP_001078927 Entrez Gene 12388 Mouse Entrez Gene 311163 Rat Entrez Gene 1500 Human O60716



[View online »](#)

Background:

Catenin d-1 (p120 catenin) has an amino-terminal coiled-coil domain followed by a regulatory domain containing multiple phosphorylation sites and a central Armadillo repeat domain of ten linked 42-amino acid repeats. The carboxy-terminal tail has no known function. Catenin d-1 fulfills critical roles in the regulation of cell-cell adhesion as it regulates E-cadherin turnover at the cell surface to determine the level of E-cadherin available for cell-cell adhesion. Catenin d-1 has both positive and negative effects on cadherin-mediated adhesion. Actin dynamics are also regulated by catenin d-1, which modulates RhoA, Rac, and cdc42 proteins. Analogous to β -catenin, catenin d-1 translocates to the nucleus, although its role at this location is unclear. Many studies show that catenin d-1 is expressed irregularly or is absent in various types of tumor cells, suggesting that catenin d-1 may function as a tumor suppressor. Phosphorylation of Tyr904 on Catenin-d-1 was identified at Cell Signaling Technology (CST) using PhosphoScan®, a CST's LC-MS/MS platform for phosphorylation site discovery.

Synonyms:

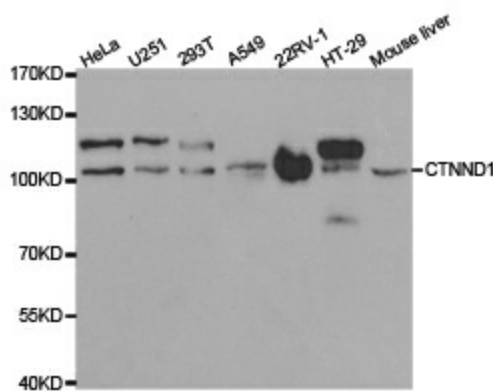
CAS; CTNND; p120; p120(CAS); p120(CTN); P120CAS; P120CTN

Protein Families:

Druggable Genome

Protein Pathways:

Adherens junction, Leukocyte transendothelial migration

Product images:

Western blot analysis of extracts of various cell lines, using CTNND1 antibody.