

## Product datasheet for **TA327057**

### CES2 Rabbit Polyclonal Antibody

#### Product data:

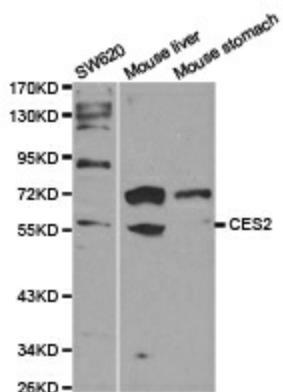
Product Type:	Primary Antibodies
Applications:	ICC/IF, WB
Recommended Dilution:	WB 1:500 - 1:2000;IF 1:50- 1:200
Reactivity:	Human, Mouse
Host:	Rabbit
Isotype:	IgG
Clonality:	Polyclonal
Immunogen:	A synthetic peptide of human CES2
Formulation:	Store at -20C or -80C. Avoid freeze / thaw cycles. Buffer: PBS with 0.02% sodium azide, 50% glycerol, pH7.3
Concentration:	lot specific
Purification:	Affinity purification
Conjugation:	Unconjugated
Storage:	Store at -20°C as received.
Stability:	Stable for 12 months from date of receipt.
Gene Name:	carboxylesterase 2
Database Link:	<a href="#">NP_003860</a> <a href="#">Entrez Gene 8824 Human</a> <a href="#">O00748</a>
Background:	This gene encodes a member of the carboxylesterase large family. The family members are responsible for the hydrolysis or transesterification of various xenobiotics, such as cocaine and heroin, and endogenous substrates with ester, thioester, or amide bonds. They may participate in fatty acyl and cholesterol ester metabolism, and may play a role in the blood-brain barrier system. The protein encoded by this gene is the major intestinal enzyme and functions in intestine drug clearance. Alternatively spliced transcript variants have been found for this gene.
Synonyms:	CE-2; CES2A1; iCE; PCE-2
Protein Families:	Druggable Genome



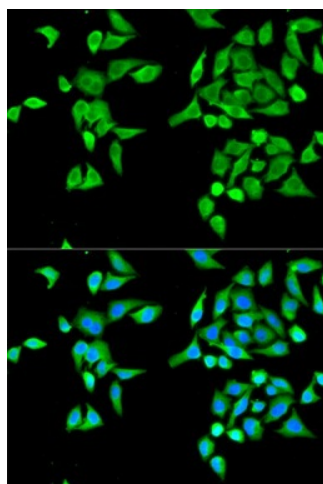
[View online »](#)

Protein Pathways: Drug metabolism - other enzymes

### Product images:



Western blot analysis of extracts of various cell lines, using CES2 antibody.



Immunofluorescence analysis of MCF-7 cell using CES2 antibody. Blue: DAPI for nuclear staining.