

Product datasheet for **TA326885**

Cyclophilin A (PPIA) Rabbit Polyclonal Antibody

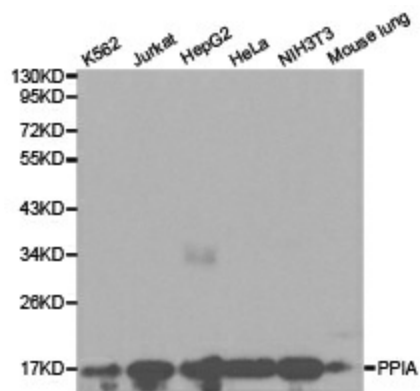
Product data:

Product Type:	Primary Antibodies
Applications:	WB
Recommended Dilution:	WB 1:500 - 1:2000
Reactivity:	Human, Mouse, Rat
Host:	Rabbit
Isotype:	IgG
Clonality:	Polyclonal
Immunogen:	Recombinant protein of human PPIA
Formulation:	Store at -20C or -80C. Avoid freeze / thaw cycles. Buffer: PBS with 0.02% sodium azide, 50% glycerol, pH7.3
Concentration:	lot specific
Purification:	Affinity purification
Conjugation:	Unconjugated
Storage:	Store at -20°C as received.
Stability:	Stable for 12 months from date of receipt.
Gene Name:	peptidylprolyl isomerase A
Database Link:	NP_066953 Entrez Gene 25518 Rat Entrez Gene 268373 Mouse Entrez Gene 5478 Human P62937
Background:	Cyclophilins are a highly conserved family of peptidylprolylcis-trans-isomerases (PPIA) that are targets of the immunosuppressant drug cyclosporin A (CsA). The complex of cyclophilin and CsA can bind to and inhibit calcineurin which leads to inhibition of the transcription factor NFAT and decreased production of cytokines. As isomerases, cyclophilins have been proposed to aid in protein folding. Cyclophilin A can bind to the p55 Gag protein of HIV and appears necessary for HIV infection There is also some evidence that cyclophilins have nuclease activity and play a role in apoptosis.
Synonyms:	CYPA; CYPH; HEL-S-69p



[View online »](#)

Product images:



Western blot analysis of extracts of various cell lines, using PPIA antibody.