

Product datasheet for **TA326729**

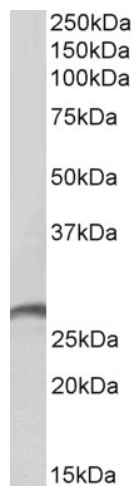
PR3 (PRTN3) Goat Polyclonal Antibody

Product data:

Product Type:	Primary Antibodies
Applications:	IHC, WB
Recommended Dilution:	ELISA: 1:1000; WB: 1-3µg/ml.IHC:5µg/ml.
Reactivity:	Human
Host:	Goat
Isotype:	IgG
Clonality:	Polyclonal
Immunogen:	Peptide with sequence C-HNVRTQEPTQQ, from the internal region of the protein sequence according to NP_002768.3.
Formulation:	Supplied at 0.5 mg/ml in Tris saline, 0.02% sodium azide, pH7.3 with 0.5% bovine serum albumin. Aliquot and store at -20°C. Minimize freezing and thawing.
Concentration:	lot specific
Purification:	Purified from goat serum by ammonium sulphate precipitation followed by antigen affinity chromatography using the immunizing peptide.
Conjugation:	Unconjugated
Storage:	Store at -20°C as received.
Stability:	Stable for 12 months from date of receipt.
Gene Name:	proteinase 3
Database Link:	NP_002768 Entrez Gene 5657 Human P24158
Synonyms:	ACPA; AGP7; C-ANCA; CANCA; MBN; MBT; NP-4; NP4; P29; PR-3; PR3
Note:	Approx 27kDa band observed in Human Spleen lysates (calculated MW of 27.8kDa according to NP_002768.3). Recommended concentration: 1-3µg/ml.
Protein Families:	Druggable Genome, Protease



[View online »](#)

Product images:

TA326729 (2ug/ml) staining of Human Spleen lysate (35ug protein in RIPA buffer). Primary incubation was 1 hour. Detected by chemiluminescence.