

Product datasheet for **TA326667**

IL36 gamma (IL36G) Rabbit Polyclonal Antibody

Product data:

Product Type:	Primary Antibodies
Applications:	IF, IHC, WB
Recommended Dilution:	WB: 1 - 2 ug/mL
Reactivity:	Human
Host:	Rabbit
Isotype:	IgG
Clonality:	Polyclonal
Immunogen:	IL-36G antibody was raised against a 13 amino acid peptide near the carboxy terminus of human IL-36G.
Formulation:	IL-36G antibody is supplied in PBS containing 0.02% sodium azide.
Concentration:	1 mg/ml
Purification:	IL-36G antibody is affinity chromatography purified via peptide column.
Conjugation:	Unconjugated
Storage:	Store at -20°C as received.
Stability:	Stable for 12 months from date of receipt.
Predicted Protein Size:	Predicted: 19 kDa; Observed: 22 kDa
Gene Name:	interleukin 36, gamma
Database Link:	NP_062564 Entrez Gene 56300 Human Q9NZH8

Background: IL-36G is a member of the interleukin 1 cytokine family whose gene and eight other interleukin 1 family genes form a cytokine gene cluster on chromosome 2 (1). IL-36G is thought to activate the NF-kappaB pathway through IL-1 receptor family members IL-1RL2 and IL-1RAcP (2). Like the related proteins IL-36A and IL-36B, IL-36G requires post-translational processing for full agonist activity, but the cleavage mechanism is currently unknown (3). IL-36G expression is stimulated by interferon-gamma, tumor necrosis factor-alpha and interleukin 1 (4). The IL-36 cytokines have been suggested to amplify Th1 responses by enhancing proliferation and Th1 polarization of naive CD4+ T cells (5).

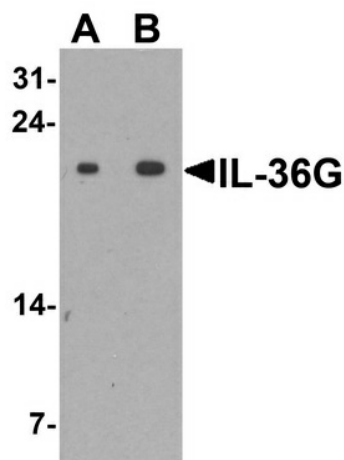


[View online »](#)

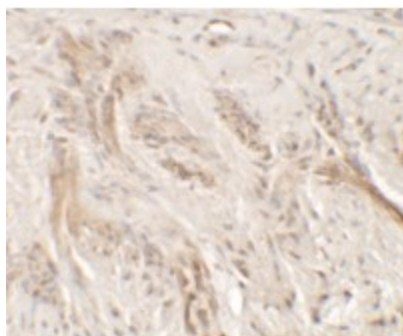
Synonyms: IL-1F9; IL-1H1; IL-1RP2; IL1E; IL1F9; IL1H1; IL1RP2

Protein Families: Druggable Genome, Secreted Protein

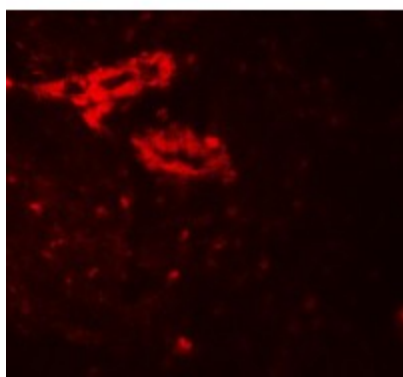
Product images:



Western blot analysis of IL-36G in human spleen tissue lysate with IL-36G antibody at (A) 1 and (B) 2 ug/ml.



Immunohistochemistry of IL-36G in human bladder tissue with IL-36G antibody at 5 ug/mL.



Immunofluorescence of IL-36G in human bladder tissue with IL-36G antibody at 20 ug/mL.