

Product datasheet for **TA326590**

Slc17a6 Mouse Monoclonal Antibody [Clone ID: S29-29]

Product data:

Product Type:	Primary Antibodies
Clone Name:	S29-29
Applications:	WB
Reactivity:	Mouse, Rat
Host:	Mouse
Isotype:	IgG1
Clonality:	Monoclonal
Immunogen:	Fusion protein amino acids 501-582 (cytoplasmic C-terminus) of rat VGLUT2.
Formulation:	PBS pH7.4, 50% glycerol
Concentration:	lot specific
Purification:	Protein G Purified
Conjugation:	Unconjugated
Storage:	Store at -20°C as received.
Stability:	Stable for 12 months from date of receipt.
Gene Name:	solute carrier family 17 member 6
Database Link:	NP_445879

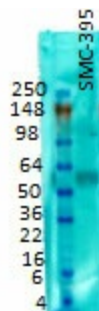
[Entrez Gene 140919 Mouse](#)[Entrez Gene 84487 Rat](#)
[Q9JI12](#)

Background: The ATP-dependent, chloride-sensitive vesicular glutamate transporters (VGLUT) include BNPI (VGLUT1), VGLUT2 (DNPI) and VGLUT3. The brain expresses BNPI (brain specific Na⁺-dependent inorganic phosphate (Pi) cotransporter) and VGLUT2 in a complementary fashion. The telencephalic regions express BNPI, whereas the lower brainstem and diencephalic regions express VGLUT2. Rat pinealocytes express both BNPI and VGLUT2. The striatum, hippocampus, cerebral cortex and raphe nuclei express VGLUT3 in a small number of neurons. Pancreatic and cells express BNPI and VGLUT2 in response to glucose concentrations. Human VGLUT3 shares a 72% sequence homology with VGLUT2 and BNPI.

Synonyms: DNPI; VGLUT2
Note: Detects ~60kDa.



[View online »](#)

Product images:

Western blot analysis of VGlut2 on rat membrane tissues using a 1:1000 dilution of the antibody