

## Product datasheet for **TA326512**

### Aqp3 Rabbit Polyclonal Antibody

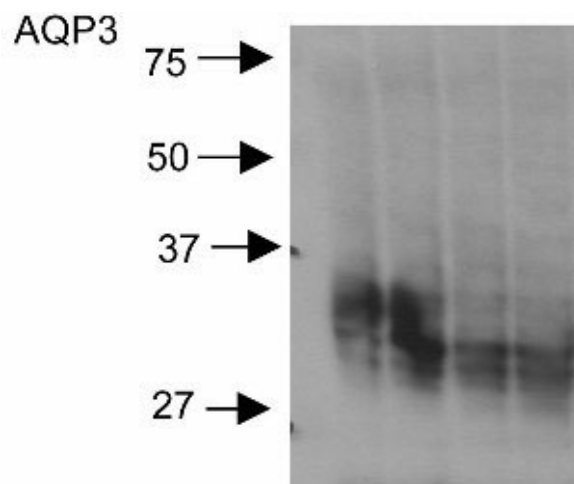
#### Product data:

Product Type:	Primary Antibodies
Applications:	IF, WB
Recommended Dilution:	WB 1:1000-4000, IF: 1:200-400
Reactivity:	Human, Mouse, Rat
Host:	Rabbit
Clonality:	Polyclonal
Immunogen:	C-terminal peptide
Formulation:	PBS pH7.4, 50% glycerol and 0.09% sodium azide
Concentration:	lot specific
Purification:	Affinity Purified
Conjugation:	Unconjugated
Storage:	Store at -20°C as received.
Stability:	Stable for 12 months from date of receipt.
Gene Name:	aquaporin 3
Database Link:	<a href="#">NP_113891</a> <a href="#">Entrez Gene 360 Human</a> <a href="#">Entrez Gene 11828 Mouse</a> <a href="#">Entrez Gene 65133 Rat</a> <a href="#">P47862</a>
Background:	Aquaporins selectively conduct water molecules in and out of the cell, while preventing the passage of ions and other solutes. Known as water channels, they are integral membrane pore proteins. Aquaporin 3 is found in the basolateral cell membrane of principal collecting duct cells and provide a pathway for water to exit these cells. AQP3 gene expression is not regulated by vasopressin.
Synonyms:	AQP-3; GIL
Note:	Detects ~31.5kDa. May detect larger glycosylated bands ~35-50kDa.

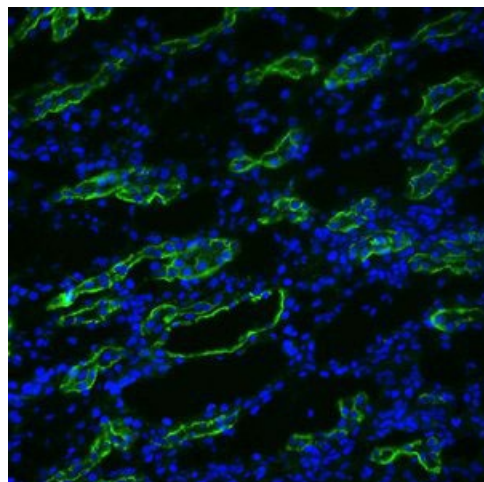


[View online »](#)

## Product images:



Western blot analysis of Aquaporin 3 in rat kidney lysates using a 1 in 2000 dilution of the antibody



IF analysis of Aquaporin 3 in rat kidney tissues using a 1 in 200 dilution of the antibody