

## Product datasheet for **TA326424**

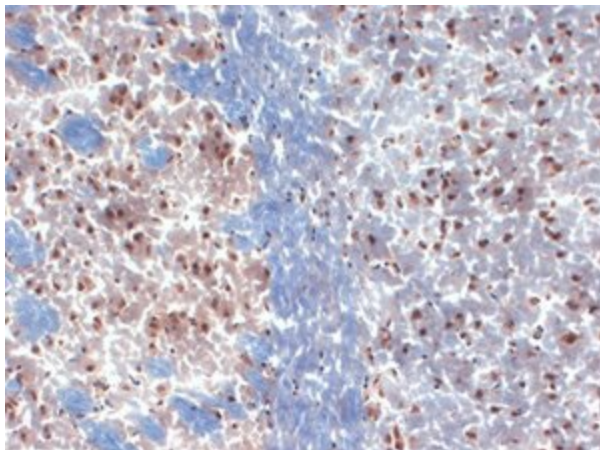
### KCNA3 Mouse Monoclonal Antibody [Clone ID: S23-27]

#### Product data:

Product Type:	Primary Antibodies
Clone Name:	S23-27
Applications:	IHC
Recommended Dilution:	WB: 1ug/ml, IHC: 0.1-1ug/ml, IF: 1-10ug/ml
Reactivity:	Human, Mouse, Rat
Host:	Mouse
Isotype:	IgG2a
Clonality:	Monoclonal
Immunogen:	Synthetic peptide amino acids 485- 506 (Cytoplasmic C-terminus) of rat Kv1.3 (GGMNHSAFPQTPFKTGNSYATC)
Formulation:	PBS pH7.4, 50% glycerol, 0.09% sodium azide
Concentration:	lot specific
Purification:	Protein G Purified
Conjugation:	Unconjugated
Storage:	Store at -20°C as received.
Stability:	Stable for 12 months from date of receipt.
Gene Name:	potassium voltage-gated channel subfamily A member 3
Database Link:	<a href="#">NP_002223</a> <a href="#">Entrez Gene 16491 Mouse</a> <a href="#">Entrez Gene 29731 Rat</a> <a href="#">Entrez Gene 3738 Human</a> <a href="#">P22001</a>
Background:	Voltage gated channels are tetrameters composed of four alpha-subunits arranged around a central pole. Each alphasubunit consists of six transmembrane segments with cytoplasmic NH2 and COOH-termini. Members of the KV1-4 subfamilies generate functional K+ channels in a homotetrameric configuration .
Synonyms:	HGK5; HLK3; HPCN3; HUKIII; KV1.3; MK3; PCN3
Note:	Detects ~70kDa.
Protein Families:	Druggable Genome, Ion Channels: Potassium, Transmembrane



[View online »](#)

**Product images:**

IHC analysis of Kv1.3 in frozen sections of mouse brain extract using the antibody