

Product datasheet for **TA326296**

ADAM17 Rabbit Polyclonal Antibody

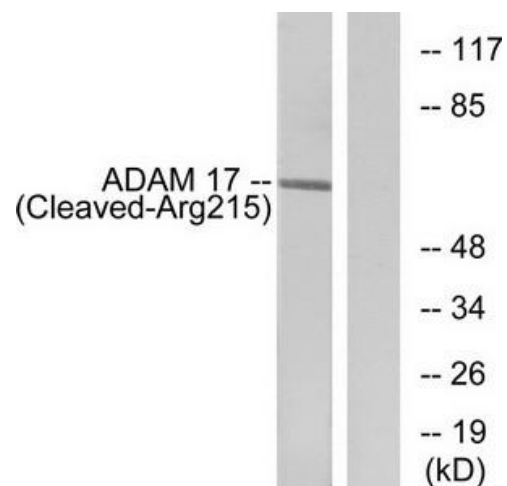
Product data:

Product Type:	Primary Antibodies
Applications:	WB
Recommended Dilution:	WB: 1:500~1:3000 ELISA: 1:20000
Reactivity:	Human
Host:	Rabbit
Isotype:	IgG
Clonality:	Polyclonal
Immunogen:	The antiserum was produced against synthesized peptide derived from human ADAM 17.
Formulation:	Phosphate buffered saline (without Mg ²⁺ and Ca ²⁺), pH 7.4, 150mM NaCl, 0.02% sodium azide and 50% glycerol.
Concentration:	lot specific
Purification:	The antibody was affinity-purified from rabbit antiserum by affinity-chromatography using epitope-specific immunogen.
Conjugation:	Unconjugated
Storage:	Store at -20°C as received.
Stability:	Stable for 12 months from date of receipt.
Gene Name:	ADAM metallopeptidase domain 17
Database Link:	NP_003174 Entrez Gene 6868 Human P78536
Synonyms:	ADAM18; CD156B; CSVP; NISBD; NISBD1; TACE
Protein Families:	Druggable Genome, Protease, Transmembrane
Protein Pathways:	Alzheimer's disease, Epithelial cell signaling in Helicobacter pylori infection, Notch signaling pathway



[View online »](#)

Product images:



Western blot analysis of extracts from rat liver cells, using ADAM 17 (Cleaved-Arg215) antibody. The lane on the right is treated with the synthesized peptide.