

## Product datasheet for **TA326253**

### Prostate Specific Antigen (KLK3) Rabbit Polyclonal Antibody

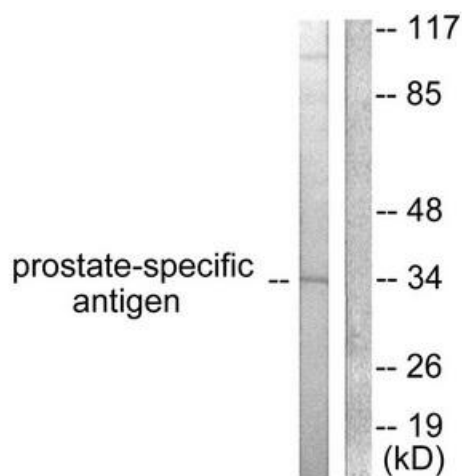
#### Product data:

Product Type:	Primary Antibodies
Applications:	IHC, WB
Recommended Dilution:	WB: 1:500~1:3000 IHC: 1:50~1:100ELISA: 1:20000
Reactivity:	Human, Mouse
Host:	Rabbit
Isotype:	IgG
Clonality:	Polyclonal
Immunogen:	The antiserum was produced against synthesized peptide derived from human prostate-specific Antigen.
Formulation:	Phosphate buffered saline (without Mg <sup>2+</sup> and Ca <sup>2+</sup> ), pH 7.4, 150mM NaCl, 0.02% sodium azide and 50% glycerol.
Concentration:	lot specific
Purification:	The antibody was affinity-purified from rabbit antiserum by affinity-chromatography using epitope-specific immunogen.
Conjugation:	Unconjugated
Storage:	Store at -20°C as received.
Stability:	Stable for 12 months from date of receipt.
Gene Name:	kallikrein related peptidase 3
Database Link:	<a href="#">NP_001639</a> <a href="#">Entrez Gene 354 Human</a> <a href="#">P07288</a>
Synonyms:	APS; hK3; KLK2A1; PSA
Protein Families:	Druggable Genome, Protease, Secreted Protein
Protein Pathways:	Pathways in cancer, Prostate cancer

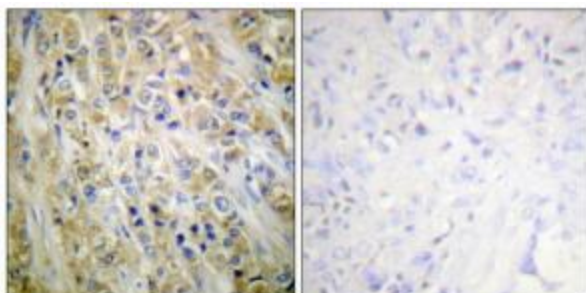


[View online »](#)

## Product images:



Western blot analysis of extracts from mouse heart, using Prostate-specific Antigen antibody (#TA326253). The lane on the right is treated with the synthesized peptide.



Immunohistochemical analysis of paraffin-embedded human prostate carcinoma tissue using Prostate-specific Antigen antibody (#TA326253). The picture on the right is treated with the synthesized peptide.