

Product datasheet for **TA326225**

SPI1 Rabbit Polyclonal Antibody

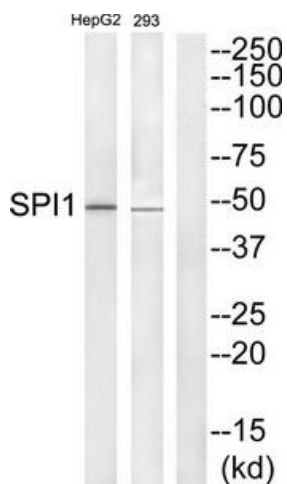
Product data:

Product Type:	Primary Antibodies
Applications:	WB
Recommended Dilution:	WB: 1:500~1:3000 ELISA: 1:40000
Reactivity:	Human, Mouse, Rat
Host:	Rabbit
Isotype:	IgG
Clonality:	Polyclonal
Immunogen:	he antiserum was produced against synthesized peptide derived from internal of human SPI1.
Formulation:	Phosphate buffered saline (without Mg ²⁺ and Ca ²⁺), pH 7.4, 150mM NaCl, 0.02% sodium azide and 50% glycerol.
Concentration:	lot specific
Purification:	The antibody was affinity-purified from rabbit antiserum by affinity-chromatography using epitope-specific immunogen.
Conjugation:	Unconjugated
Storage:	Store at -20°C as received.
Stability:	Stable for 12 months from date of receipt.
Gene Name:	Spi-1 proto-oncogene
Database Link:	NP_003111 Entrez Gene 20375 MouseEntrez Gene 366126 RatEntrez Gene 6688 Human P17947
Synonyms:	OF; PU.1; SFPI1; SPI-1; SPI-A
Protein Families:	Transcription Factors
Protein Pathways:	Acute myeloid leukemia, Pathways in cancer



[View online »](#)

Product images:



Western blot analysis of extracts from COS-7 cells, using SPI1 antibody. The lane on the right is treated with the synthesized peptide.