

Product datasheet for **TA326221**

BCKDH kinase (BCKDK) Rabbit Polyclonal Antibody

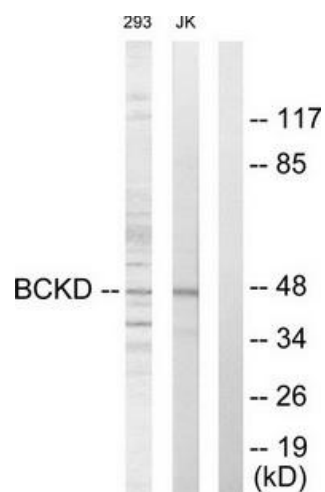
Product data:

Product Type:	Primary Antibodies
Applications:	IF, WB
Recommended Dilution:	WB: 1:500~1:3000 IF: 1:100~1:500 ELISA: 1:20000
Reactivity:	Human, Mouse, Rat
Host:	Rabbit
Isotype:	IgG
Clonality:	Polyclonal
Immunogen:	The antiserum was produced against synthesized peptide derived from Internal of human BCKD.
Formulation:	Phosphate buffered saline (without Mg ²⁺ and Ca ²⁺), pH 7.4, 150mM NaCl, 0.02% sodium azide and 50% glycerol.
Concentration:	lot specific
Purification:	The antibody was affinity-purified from rabbit antiserum by affinity-chromatography using epitope-specific immunogen.
Conjugation:	Unconjugated
Storage:	Store at -20°C as received.
Stability:	Stable for 12 months from date of receipt.
Gene Name:	branched chain ketoacid dehydrogenase kinase
Database Link:	NP_005872 Entrez Gene 12041 MouseEntrez Gene 29603 RatEntrez Gene 10295 Human O14874
Synonyms:	BCKDKD; BDK
Protein Families:	Druggable Genome, Protein Kinase

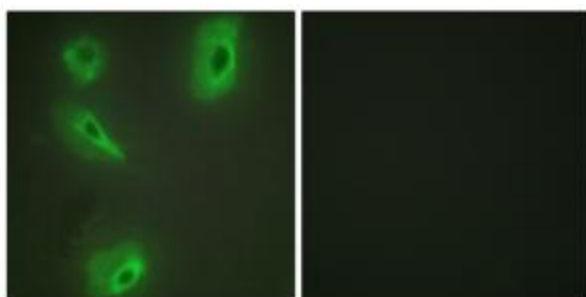


[View online »](#)

Product images:



Western blot analysis of extracts from 293 cells and Jurkat cells, using BCKD antibody. The lane on the right is treated with the synthesized peptide.



Immunofluorescence analysis of HeLa cells, using BCKD antibody. The picture on the right is treated with the synthesized peptide.