

Product datasheet for **TA326193**

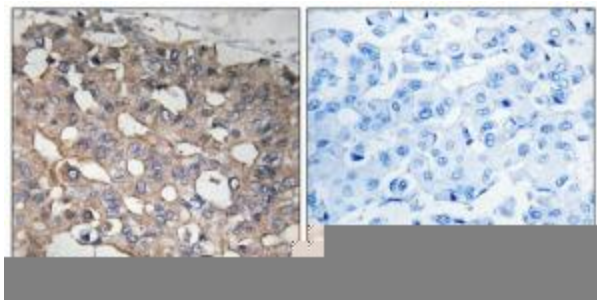
Stathmin 1 (STMN1) Rabbit Polyclonal Antibody

Product data:

Product Type:	Primary Antibodies
Applications:	IHC
Recommended Dilution:	IHC: 1:50~1:100 ELISA: 1:20000
Reactivity:	Human, Mouse, Rat
Host:	Rabbit
Isotype:	IgG
Clonality:	Polyclonal
Immunogen:	The antiserum was produced against synthesized peptide derived from Internal of human STMN1.
Formulation:	Phosphate buffered saline (without Mg ²⁺ and Ca ²⁺), pH 7.4, 150mM NaCl, 0.02% sodium azide and 50% glycerol.
Concentration:	lot specific
Purification:	The antibody was affinity-purified from rabbit antiserum by affinity-chromatography using epitope-specific immunogen.
Conjugation:	Unconjugated
Storage:	Store at -20°C as received.
Stability:	Stable for 12 months from date of receipt.
Gene Name:	stathmin 1
Database Link:	NP_981944 Entrez Gene 16765 MouseEntrez Gene 29332 RatEntrez Gene 3925 Human P16949
Synonyms:	C1orf215; Lag; LAP18; OP18; PP17; PP19; PR22; SMN
Protein Pathways:	MAPK signaling pathway



[View online »](#)

Product images:

Immunohistochemistry analysis of paraffin-embedded human breast carcinoma tissue using STMN1 antibody. The picture on the right is treated with the synthesized peptide.