

Product datasheet for **TA326189**

MEF2C Rabbit Polyclonal Antibody

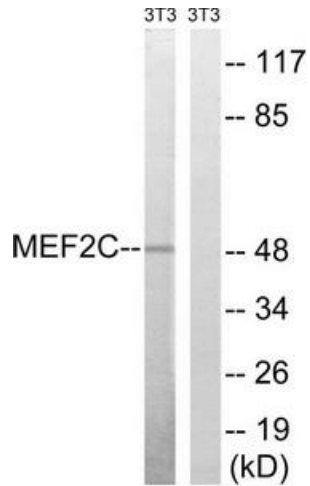
Product data:

Product Type:	Primary Antibodies
Applications:	WB
Recommended Dilution:	WB: 1:500~1:3000 ELISA: 1:40000
Reactivity:	Human, Mouse
Host:	Rabbit
Isotype:	IgG
Clonality:	Polyclonal
Immunogen:	The antiserum was produced against synthesized non-phosphopeptide derived from human MEF2C around the phosphorylation site of serine 396 (P-V-SP-P-P).
Formulation:	Phosphate buffered saline (without Mg ²⁺ and Ca ²⁺), pH 7.4, 150mM NaCl, 0.02% sodium azide and 50% glycerol.
Concentration:	lot specific
Purification:	The antibody was affinity-purified from rabbit antiserum by affinity-chromatography using epitope-specific immunogen.
Conjugation:	Unconjugated
Storage:	Store at -20°C as received.
Stability:	Stable for 12 months from date of receipt.
Gene Name:	myocyte enhancer factor 2C
Database Link:	NP_002388 Entrez Gene 17260 Mouse Entrez Gene 4208 Human Q06413
Synonyms:	C5DELq14.3; DEL5q14.3
Protein Families:	Transcription Factors
Protein Pathways:	MAPK signaling pathway

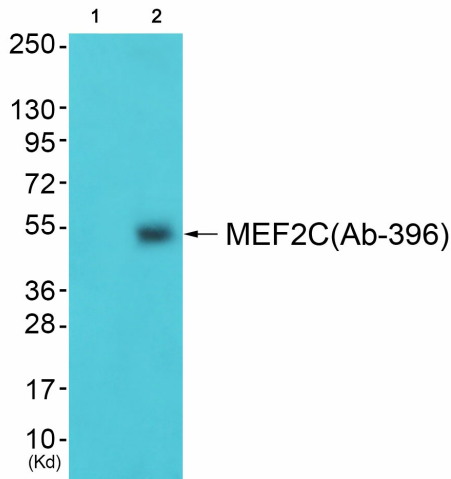


[View online »](#)

Product images:



Western blot analysis of extracts from 3T3 cells, treated with starved (24hours), using MEF2C (Ab-396) antibody. The lane on the right is treated with the synthesized peptide.



Western blot analysis of extracts from 3T3 cells (Lane 2), using MEF2C (Ab-396) Antibody. The lane on the left is treated with synthesized peptide.