

Product datasheet for **TA326169**

PAK1 Rabbit Polyclonal Antibody

Product data:

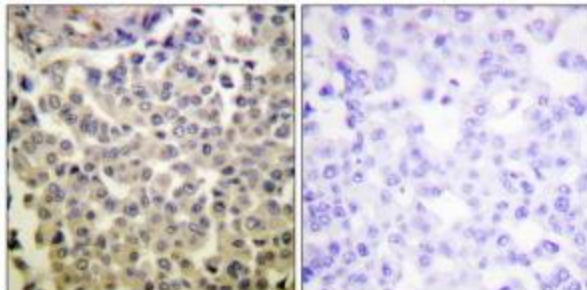
Product Type:	Primary Antibodies
Applications:	IHC
Recommended Dilution:	IHC: 1:50~1:100 ELISA: 1:5000
Reactivity:	Human, Mouse, Rat
Modifications:	Phospho-specific
Host:	Rabbit
Isotype:	IgG
Clonality:	Polyclonal
Immunogen:	The antiserum was produced against synthesized phosphopeptide derived from human PAK1/2/3 around the phosphorylation site of threonine 423/402/421 (R-S-TP-M-V).
Formulation:	Phosphate buffered saline (without Mg ²⁺ and Ca ²⁺), pH 7.4, 150mM NaCl, 0.02% sodium azide and 50% glycerol.
Concentration:	lot specific
Purification:	The antibody was affinity-purified from rabbit antiserum by affinity-chromatography using epitope-specific immunogen.
Conjugation:	Unconjugated
Storage:	Store at -20°C as received.
Stability:	Stable for 12 months from date of receipt.
Gene Name:	p21 (RAC1) activated kinase 1
Database Link:	NP_001122092 Entrez Gene 18479 Mouse Entrez Gene 29431 Rat Entrez Gene 5058 Human Q13153
Synonyms:	PAKalpha
Protein Families:	Druggable Genome, Protein Kinase, Stem cell - Pluripotency



[View online »](#)

Protein Pathways:

Axon guidance, Chemokine signaling pathway, Epithelial cell signaling in Helicobacter pylori infection, ErbB signaling pathway, Fc gamma R-mediated phagocytosis, Focal adhesion, MAPK signaling pathway, Natural killer cell mediated cytotoxicity, Regulation of actin cytoskeleton, Renal cell carcinoma, T cell receptor signaling pathway

Product images:

Immunohistochemistry analysis of paraffin-embedded human breast carcinoma tissue using PAK1/2/3 (Phospho-Thr423/402/421) antibody. The picture on the right is treated with the synthesized peptide.