

Product datasheet for **TA326126**

alpha Tubulin (TUBA1A) Rabbit Polyclonal Antibody

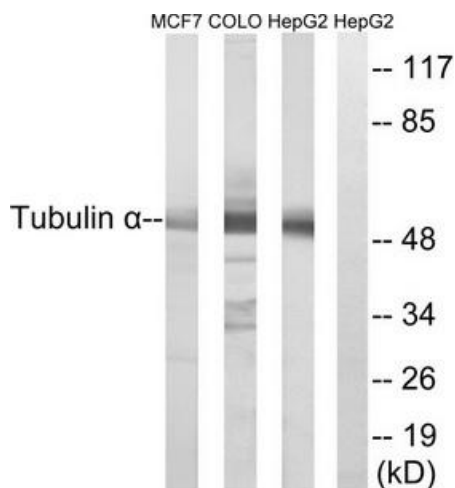
Product data:

Product Type:	Primary Antibodies
Applications:	IF, IHC, WB
Recommended Dilution:	WB: 1:500~1:3000 IHC: 1:50~1:100 IF: 1:100~1:500 ELISA: 1:5000
Reactivity:	Mouse, Rat, Human
Host:	Rabbit
Isotype:	IgG
Clonality:	Polyclonal
Immunogen:	The antiserum was produced against synthesized peptide derived from C-terminal of human Tubulin α .
Formulation:	Phosphate buffered saline (without Mg ²⁺ and Ca ²⁺), pH 7.4, 150mM NaCl, 0.02% sodium azide and 50% glycerol.
Concentration:	lot specific
Purification:	The antibody was affinity-purified from rabbit antiserum by affinity-chromatography using epitope-specific immunogen.
Conjugation:	Unconjugated
Storage:	Store at -20°C as received.
Stability:	Stable for 12 months from date of receipt.
Gene Name:	tubulin alpha 1a
Database Link:	NP_006000 Entrez Gene 22142 Mouse Entrez Gene 64158 Rat Entrez Gene 7846 Human Q71U36
Synonyms:	B-ALPHA-1; LIS3; TUBA3
Protein Families:	Druggable Genome
Protein Pathways:	Gap junction, Pathogenic Escherichia coli infection

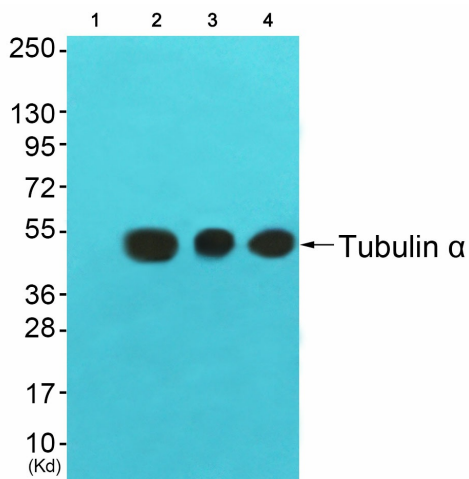


[View online »](#)

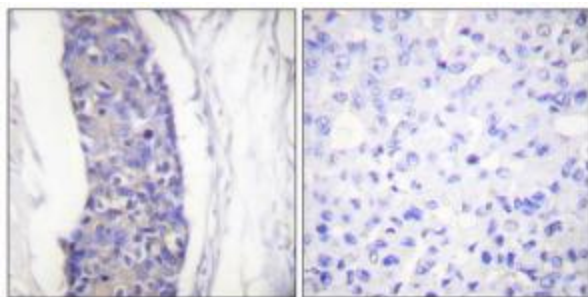
Product images:



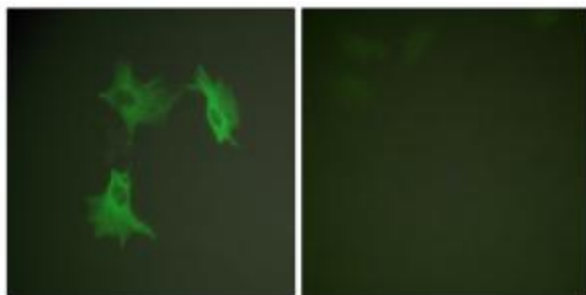
Western blot analysis of extracts from MCF7, COLO and HepG2 cells, using Tubulin antibody. The lane on the right is treated with the synthesized peptide.



Western blot analysis of extracts from 3T3 cells (Lane 2), COLO cells (Lane 3) and HuvEc cells (Lane 4), using Tubulin antibody. The lane on the left is treated with synthesized peptide.



Immunohistochemistry analysis of paraffin-embedded human breast carcinoma tissue using Tubulin antibody. The picture on the right is treated with the synthesized peptide.



Immunofluorescence analysis of NIH/3T3 cells, using Tubulin. antibody. The picture on the right is treated with the synthesized peptide.