

## Product datasheet for **TA326117**

### Osteopontin (SPP1) Rabbit Polyclonal Antibody

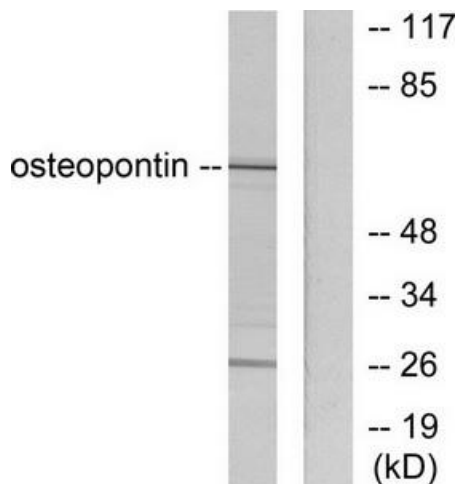
#### Product data:

Product Type:	Primary Antibodies
Applications:	WB
Recommended Dilution:	WB: 1:500~1:3000 ELISA: 1:20000
Reactivity:	Human, Mouse, Rat
Host:	Rabbit
Isotype:	IgG
Clonality:	Polyclonal
Immunogen:	The antiserum was produced against synthesized peptide derived from human osteopontin .
Formulation:	Phosphate buffered saline (without Mg <sup>2+</sup> and Ca <sup>2+</sup> ), pH 7.4, 150mM NaCl, 0.02% sodium azide and 50% glycerol.
Concentration:	lot specific
Purification:	The antibody was affinity-purified from rabbit antiserum by affinity-chromatography using epitope-specific immunogen.
Conjugation:	Unconjugated
Storage:	Store at -20°C as received.
Stability:	Stable for 12 months from date of receipt.
Gene Name:	secreted phosphoprotein 1
Database Link:	<a href="#">NP_000573</a> <a href="#">Entrez Gene 20750 Mouse</a> <a href="#">Entrez Gene 25353 Rat</a> <a href="#">Entrez Gene 6696 Human</a> <a href="#">P10451</a>
Synonyms:	BNSP; BSPI; ETA-1; OPN
Protein Families:	Druggable Genome, Secreted Protein
Protein Pathways:	ECM-receptor interaction, Focal adhesion, Toll-like receptor signaling pathway

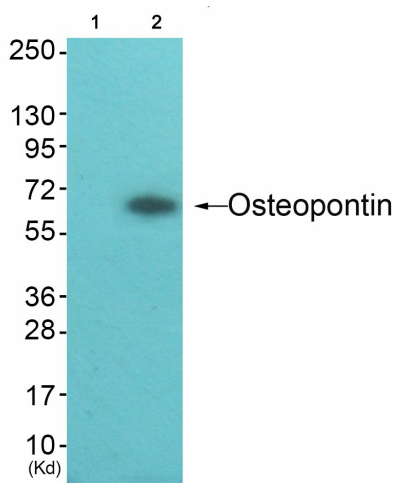


[View online »](#)

Product images:



Western blot analysis of extracts from LOVO cells, using osteopontin antibody (#TA326117).The lane on the right is treated with the synthesized peptide.



Western blot analysis of extracts from HepG2 cells (Lane 2), using Osteopontin Antibody. The lane on the left is treated with synthesized peptide.