

## Product datasheet for **TA326116**

### Oct4 (POU5F1) Rabbit Polyclonal Antibody

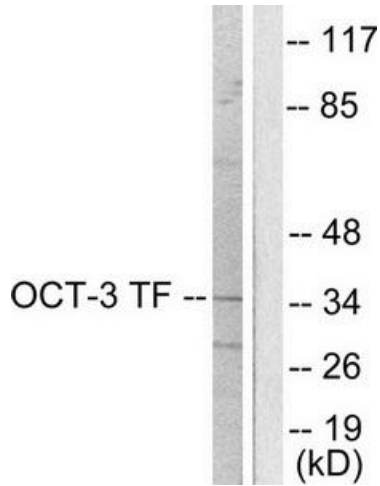
#### Product data:

Product Type:	Primary Antibodies
Applications:	IHC, WB
Recommended Dilution:	WB: 1:500~1:3000 IHC: 1:50~1:100ELISA: 1:10000
Reactivity:	Human, Mouse, Rat
Host:	Rabbit
Isotype:	IgG
Clonality:	Polyclonal
Immunogen:	The antiserum was produced against synthesized peptide derived from human OCT3 antibody.
Formulation:	Phosphate buffered saline (without Mg <sup>2+</sup> and Ca <sup>2+</sup> ), pH 7.4, 150mM NaCl, 0.02% sodium azide and 50% glycerol.
Concentration:	lot specific
Purification:	The antibody was affinity-purified from rabbit antiserum by affinity-chromatography using epitope-specific immunogen.
Conjugation:	Unconjugated
Storage:	Store at -20°C as received.
Stability:	Stable for 12 months from date of receipt.
Gene Name:	POU class 5 homeobox 1
Database Link:	<a href="#">NP_002692</a> <a href="#">Entrez Gene 18999 MouseEntrez Gene 294562 RatEntrez Gene 5460 Human Q01860</a>
Synonyms:	Oct-3; Oct-4; OCT3; OCT4; OTF-3; OTF3; OTF4
Protein Families:	Adult stem cells, Cancer stem cells, Embryonic stem cells, Induced pluripotent stem cells, Stem cell - Pluripotency, Transcription Factors

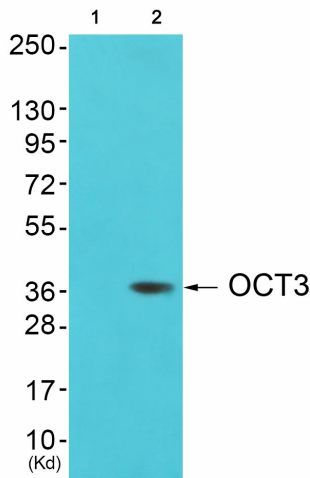


[View online »](#)

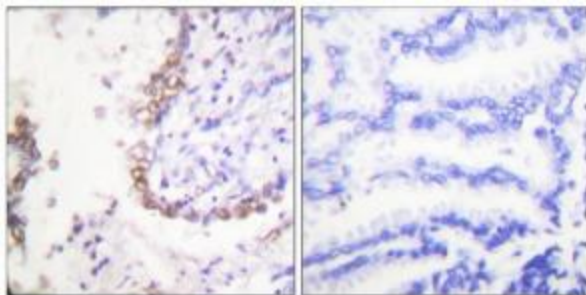
Product images:



Western blot analysis of extracts from HeLa cells, using OCT3 antibody (#TA326116).The lane on the right is treated with the synthesized peptide.



Western blot analysis of extracts from 293 cells (Lane 2), using OCT3 Antibody. The lane on the left is treated with synthesized peptide.



Immunohistochemical analysis of paraffin-embedded human lung carcinoma tissue using OCT3 antibody (#TA326116).The picture on the right is treated with the synthesized peptide.