

## Product datasheet for **TA326082**

### MEK3 (MAP2K3) Rabbit Polyclonal Antibody

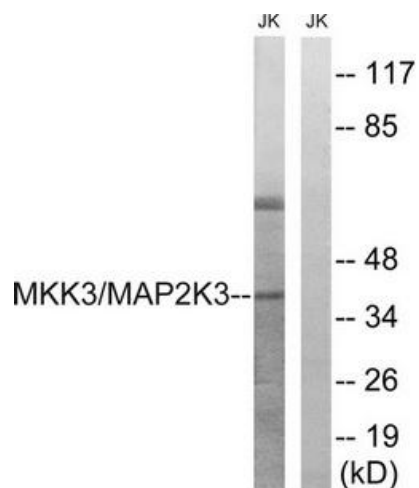
#### Product data:

Product Type:	Primary Antibodies
Applications:	WB
Recommended Dilution:	WB: 1:500~1:3000 ELISA: 1:5000
Reactivity:	Human, Mouse, Rat
Host:	Rabbit
Isotype:	IgG
Clonality:	Polyclonal
Immunogen:	The antiserum was produced against synthesized non-phosphopeptide derived from human MAP2K3 around the phosphorylation site of threonine 222 (A-K-TP-M-D).
Formulation:	Phosphate buffered saline (without Mg <sup>2+</sup> and Ca <sup>2+</sup> ), pH 7.4, 150mM NaCl, 0.02% sodium azide and 50% glycerol.
Concentration:	lot specific
Purification:	The antibody was affinity-purified from rabbit antiserum by affinity-chromatography using epitope-specific immunogen.
Conjugation:	Unconjugated
Storage:	Store at -20°C as received.
Stability:	Stable for 12 months from date of receipt.
Gene Name:	mitogen-activated protein kinase kinase 3
Database Link:	<a href="#">NP_659731</a> <a href="#">Entrez Gene 26397 MouseEntrez Gene 303200 RatEntrez Gene 5606 Human P46734</a>
Synonyms:	MAPKK3; MEK3; MKK3; PRKMK3; SAPKK-2; SAPKK2
Protein Families:	Druggable Genome, Protein Kinase, Transcription Factors
Protein Pathways:	Amyotrophic lateral sclerosis (ALS), Fc epsilon RI signaling pathway, GnRH signaling pathway, MAPK signaling pathway, Toll-like receptor signaling pathway



[View online »](#)

## Product images:



Western blot analysis of extracts from Jurkat cells, treated with serum (20%, 15mins), using MAP2K3 (Ab-222) antibody. The lane on the right is treated with the synthesized peptide.