

## Product datasheet for **TA325928**

### Synaptotagmin 1 (SYT1) Rabbit Polyclonal Antibody

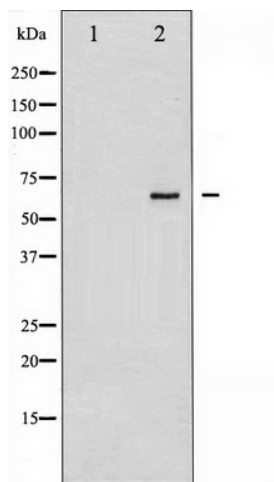
#### Product data:

Product Type:	Primary Antibodies
Applications:	WB
Recommended Dilution:	WB: 1:500-1:2000; IHC: 1:50-1:200
Reactivity:	Human, Mouse, Rat
Host:	Rabbit
Isotype:	IgG
Clonality:	Polyclonal
Immunogen:	The antiserum was produced against A synthesized peptide derived from human Synaptotagmin
Formulation:	Rabbit IgG in phosphate buffered saline , pH 7.4, 150mM NaCl, 0.02% sodium azide and 50% glycerol.
Concentration:	lot specific
Purification:	The antibody was affinity-purified from rabbit antiserum by affinity-chromatography using epitope-specific peptide.
Conjugation:	Unconjugated
Storage:	Store at -20°C as received.
Stability:	Stable for 12 months from date of receipt.
Predicted Protein Size:	65 kDa
Gene Name:	synaptotagmin 1
Database Link:	<a href="#">NP_001129277</a> <a href="#">Entrez Gene 20979 Mouse</a> <a href="#">Entrez Gene 25716 Rat</a> <a href="#">Entrez Gene 6857 Human</a> <a href="#">P21579</a>
Background:	SYT2 May have a regulatory role in the membrane interactions during trafficking of synaptic vesicles at the active zone of the synapse. It binds acidic phospholipids with a specificity that requires the presence of both an acidic head group and a diacyl backbone.
Synonyms:	P65; SVP65; SYT
Protein Families:	Secreted Protein, Transmembrane



[View online »](#)

## Product images:



Western blot analysis of Synaptotagmin expression in HeLa whole cell lysates, The lane on the left is treated with the antigen-specific peptide.