

## Product datasheet for **TA325872**

### SP1 Rabbit Polyclonal Antibody

#### Product data:

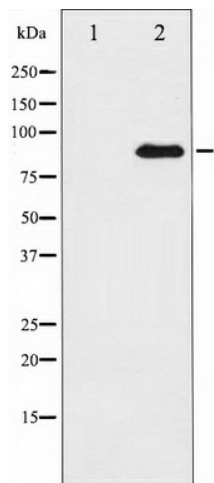
Product Type:	Primary Antibodies
Applications:	WB
Recommended Dilution:	WB: 1:500-1:2000; IHC: 1:50-1:200; IF/ICC: 1:100-1:500
Reactivity:	Human, Mouse, Rat
Host:	Rabbit
Isotype:	IgG
Clonality:	Polyclonal
Immunogen:	The antiserum was produced against A synthesized peptide derived from human SP1
Formulation:	Rabbit IgG in phosphate buffered saline , pH 7.4, 150mM NaCl, 0.02% sodium azide and 50% glycerol.
Concentration:	lot specific
Purification:	The antibody was affinity-purified from rabbit antiserum by affinity-chromatography using epitope-specific peptide.
Conjugation:	Unconjugated
Storage:	Store at -20°C as received.
Stability:	Stable for 12 months from date of receipt.
Predicted Protein Size:	81 kDa
Gene Name:	Sp1 transcription factor
Database Link:	<a href="#">NP_003100</a> <a href="#">Entrez Gene 20683 Mouse</a> <a href="#">Entrez Gene 24790 Rat</a> <a href="#">Entrez Gene 6667 Human</a> <a href="#">P08047</a>
Background:	SP1 is a transcription factor of the Sp1 C2H2-type zinc-finger protein family. Phosphorylated and activated by MAPK. Dephosphorylation by PTEN inhibits DNA binding. Binds to p38 in the nucleus.
Synonyms:	Sp1 transcription factor; specificity protein 1
Protein Families:	Druggable Genome, ES Cell Differentiation/IPS, Stem cell - Pluripotency, Stem cell relevant signaling - JAK/STAT signaling pathway, Transcription Factors



[View online »](#)

Protein Pathways: Huntington's disease, TGF-beta signaling pathway

### Product images:



Western blot analysis of SP1 expression in HT29 whole cell lysates, The lane on the left is treated with the antigen-specific peptide.