

Product datasheet for **TA325797**

c Rel (REL) Rabbit Polyclonal Antibody

Product data:

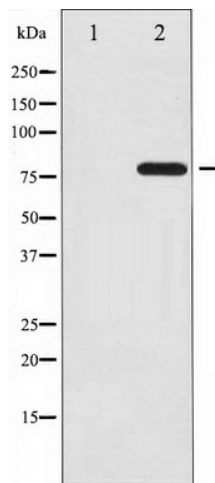
Product Type:	Primary Antibodies
Applications:	WB
Recommended Dilution:	WB: 1:500-1:2000; IHC: 1:50-1:200
Reactivity:	Human
Modifications:	Phospho-specific
Host:	Rabbit
Isotype:	IgG
Clonality:	Polyclonal
Immunogen:	The antiserum was produced against A synthesized peptide derived from human Rel around the phosphorylation site of Serine 503
Formulation:	Rabbit IgG in phosphate buffered saline , pH 7.4, 150mM NaCl, 0.02% sodium azide and 50% glycerol.
Concentration:	lot specific
Purification:	The antibody was affinity-purified from rabbit antiserum by affinity-chromatography using epitope-specific peptide.
Conjugation:	Unconjugated
Storage:	Store at -20°C as received.
Stability:	Stable for 12 months from date of receipt.
Predicted Protein Size:	78 kDa
Gene Name:	REL proto-oncogene, NF-kB subunit
Database Link:	NP_002899 Entrez Gene 5966 Human Q04864
Background:	REL a proto-oncogenic transcription factor of the nuclear factor-kappaB (NFkB) group. There are five NFkB proteins in mammals (RelA/NFkB-p65, RelB, c-Rel, NF- κ B1/NFkB-p105, and NF- κ B2/NFkB-p100).
Synonyms:	C-Rel



[View online »](#)

Protein Families: Druggable Genome, Transcription Factors

Product images:



Western blot analysis of Rel phosphorylation expression in MDA-MB-435 whole cell lysates, The lane on the left is treated with the antigen-specific peptide.