

Product datasheet for **TA325780**

PI 3 Kinase p85 alpha (PIK3R1) Rabbit Polyclonal Antibody

Product data:

Product Type:	Primary Antibodies
Applications:	WB
Recommended Dilution:	WB: 1:500-1:2000; IHC: 1:50-1:200
Reactivity:	Human, Mouse, Rat
Modifications:	Phospho-specific
Host:	Rabbit
Isotype:	IgG
Clonality:	Polyclonal
Immunogen:	The antiserum was produced against A synthesized peptide derived from human PI3-kinase p85- alpha around the phosphorylation site of Tyrosine 607
Formulation:	Rabbit IgG in phosphate buffered saline , pH 7.4, 150mM NaCl, 0.02% sodium azide and 50% glycerol.
Concentration:	lot specific
Purification:	The antibody was affinity-purified from rabbit antiserum by affinity-chromatography using epitope-specific peptide.
Conjugation:	Unconjugated
Storage:	Store at -20°C as received.
Stability:	Stable for 12 months from date of receipt.
Predicted Protein Size:	80 kDa
Gene Name:	phosphoinositide-3-kinase regulatory subunit 1
Database Link:	NP_001229395 Entrez Gene 18708 MouseEntrez Gene 25513 RatEntrez Gene 5295 Human P27986



[View online »](#)

Background:

PIK3R1 is a regulatory subunit of phosphoinositide-3-kinase. Mediates binding to a subset of tyrosine-phosphorylated proteins through its SH2 domain. Acts as an adapter, mediating the association of the p110 catalytic unit of the alpha, beta and delta enzymes to the plasma membrane, where p110 phosphorylates inositol lipids. May play an additional role in the regulation of the actin cytoskeleton. Necessary for the insulin-stimulated increase in glucose uptake and glycogen synthesis in insulin-sensitive tissues. Its SH2 domains interacts with the YTHM motif of phosphorylated INSR in vitro. Defects in PIK3R1 are a cause of severe insulin resistance. Four alternatively spliced isoforms have been described.

Synonyms:

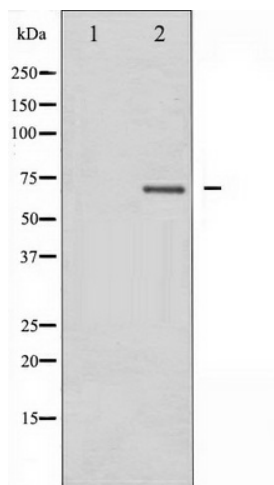
AGM7; GRB1; IMD36; p85; p85-ALPHA

Protein Families:

Druggable Genome

Protein Pathways:

Acute myeloid leukemia, Apoptosis, B cell receptor signaling pathway, Chemokine signaling pathway, Chronic myeloid leukemia, Colorectal cancer, Endometrial cancer, ErbB signaling pathway, Fc epsilon RI signaling pathway, Fc gamma R-mediated phagocytosis, Focal adhesion, Glioma, Insulin signaling pathway, Jak-STAT signaling pathway, Leukocyte transendothelial migration, Melanoma, mTOR signaling pathway, Natural killer cell mediated cytotoxicity, Neurotrophin signaling pathway, Non-small cell lung cancer, Pancreatic cancer, Pathways in cancer, Phosphatidylinositol signaling system, Progesterone-mediated oocyte maturation, Prostate cancer, Regulation of actin cytoskeleton, Renal cell carcinoma, Small cell lung cancer, T cell receptor signaling pathway, Toll-like receptor signaling pathway, Type II diabetes mellitus, VEGF signaling pathway

Product images:

Western blot analysis of PI3-kinase p85- alpha phosphorylation expression in Rat kidney tissue lysates, The lane on the left is treated with the antigen-specific peptide.