

Product datasheet for **TA325206**

ADAM17 Rabbit Polyclonal Antibody

Product data:

Product Type:	Primary Antibodies
Applications:	WB
Recommended Dilution:	WB: 1:500-1:2000
Reactivity:	Human, Mouse, Rat
Modifications:	Phospho-specific
Host:	Rabbit
Isotype:	IgG
Clonality:	Polyclonal
Immunogen:	The antiserum was produced against A synthesized peptide derived from human ADAM 17 around the phosphorylation site of Threonine 735
Formulation:	Rabbit IgG in phosphate buffered saline , pH 7.4, 150mM NaCl, 0.02% sodium azide and 50% glycerol.
Concentration:	lot specific
Purification:	The antibody was affinity-purified from rabbit antiserum by affinity-chromatography using epitope-specific peptide.
Conjugation:	Unconjugated
Storage:	Store at -20°C as received.
Stability:	Stable for 12 months from date of receipt.
Predicted Protein Size:	93 kDa
Gene Name:	ADAM metallopeptidase domain 17
Database Link:	NP_003174 Entrez Gene 11491 MouseEntrez Gene 57027 RatEntrez Gene 6868 Human P78536
Background:	This gene encodes a disintegrin and metalloprotease (ADAM) domain 17, which is a member of the ADAM protein family. Members of this family are membrane-anchored proteins structurally related to snake venom disintegrins, and have been implicated in a variety of biologic processes involving cell-cell and cell-matrix interactions, including fertilization, muscle development, and neurogenesis.

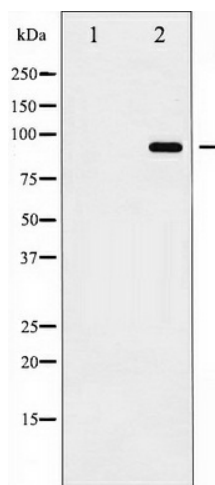


[View online »](#)

Synonyms: ADAM18; CD156B; CSVP; NISBD; NISBD1; TACE

Protein Families: Druggable Genome, Protease, Transmembrane

Protein Pathways: Alzheimer's disease, Epithelial cell signaling in Helicobacter pylori infection, Notch signaling pathway

Product images:

Western blot analysis of ADAM 17 phosphorylation expression in K562UV treated whole cell lysates, The lane on the left is treated with the antigen-specific peptide.