

## Product datasheet for **TA325183**

### gamma Sarcoglycan (SGCG) Rabbit Polyclonal Antibody

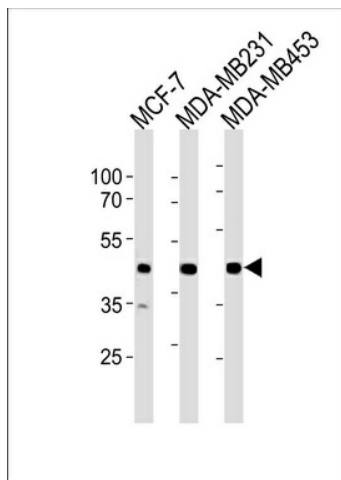
#### Product data:

Product Type:	Primary Antibodies
Applications:	WB
Recommended Dilution:	WB: 1:1000
Reactivity:	Human (Predicted: Bovine)
Host:	Rabbit
Isotype:	IgG
Clonality:	Polyclonal
Immunogen:	This SGCG antibody is generated from rabbits immunized with a KLH conjugated synthetic peptide between 145-172 amino acids from the Central region of human SGCG.
Formulation:	Purified polyclonal antibody supplied in PBS with 0.09% (W/V) sodium azide.
Concentration:	lot specific
Purification:	This antibody is purified through a protein A column, followed by peptide affinity purification.
Conjugation:	Unconjugated
Storage:	Store at -20°C as received.
Stability:	Stable for 12 months from date of receipt.
Predicted Protein Size:	32379 Da
Gene Name:	sarcoglycan gamma
Database Link:	<a href="#">NP_000222</a> <a href="#">Entrez Gene 6445 Human</a> <a href="#">Q13326</a>
Synonyms:	A4; DAGA4; DMDA; DMDA1; LGMD2C; MAM; SCARMD2; SCG3; TYPE
Protein Families:	Druggable Genome, Transmembrane
Protein Pathways:	Arrhythmogenic right ventricular cardiomyopathy (ARVC), Dilated cardiomyopathy, Hypertrophic cardiomyopathy (HCM), Viral myocarditis



[View online »](#)

## Product images:



SGCG Antibody (Center) (Cat. #TA325183)  
western blot analysis in MCF-7, MDA-MB231,  
MDA-MB453 cell line lysates (35ug/lane). This  
demonstrates the SGCG antibody detected the  
SGCG protein (arrow).