

## Product datasheet for **TA325104**

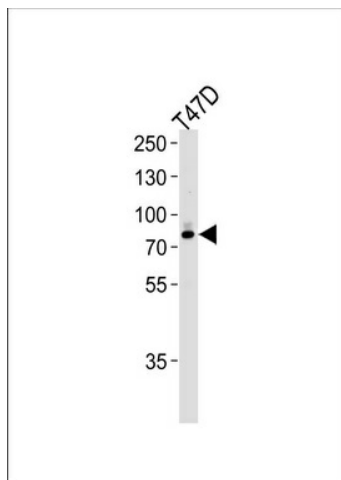
### EXT2 Rabbit Polyclonal Antibody

#### Product data:

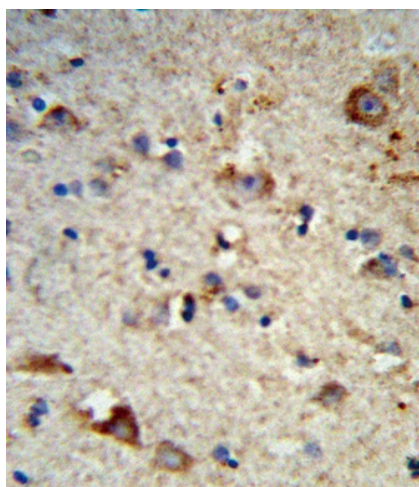
Product Type:	Primary Antibodies
Applications:	FC, IF, IHC, WB
Recommended Dilution:	WB: 1:1000, IHC: 1:10~50, IF: 1:10~50, FC: 1:10~50
Reactivity:	Human (Predicted: Mouse, Bovine)
Host:	Rabbit
Isotype:	IgG
Clonality:	Polyclonal
Immunogen:	This EXT2 antibody is generated from rabbits immunized with a KLH conjugated synthetic peptide between 182-209 amino acids from the Central region of human EXT2.
Formulation:	Purified polyclonal antibody supplied in PBS with 0.09% (W/V) sodium azide.
Concentration:	lot specific
Purification:	This antibody is purified through a protein A column, followed by peptide affinity purification.
Conjugation:	Unconjugated
Storage:	Store at -20°C as received.
Stability:	Stable for 12 months from date of receipt.
Predicted Protein Size:	82255 Da
Gene Name:	exostosin glycosyltransferase 2
Database Link:	<a href="#">NP_000392</a> <a href="#">Entrez Gene 14043 Mouse</a> <a href="#">Entrez Gene 2132 Human</a> <a href="#">Q93063</a>
Synonyms:	SOTV
Protein Families:	Druggable Genome, Transmembrane
Protein Pathways:	Heparan sulfate biosynthesis, Metabolic pathways



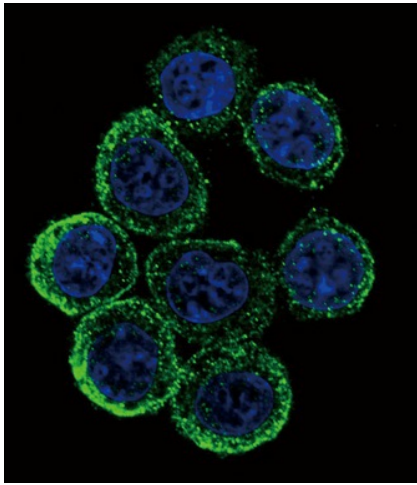
[View online »](#)

**Product images:**

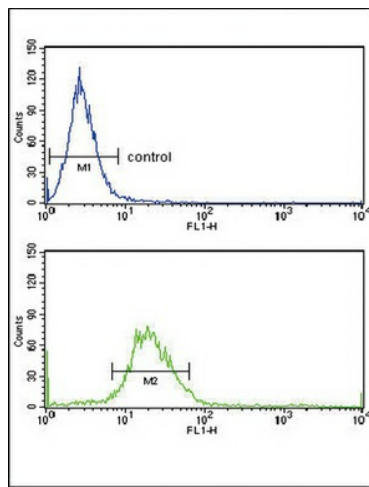
Western blot analysis of lysate from T47D cell line, using EXT2 Antibody (Center) (Cat. #TA325104).TA325104 was diluted at 1:1000 at each lane. A goat anti-rabbit IgG H&L (HRP) at 1:5000 dilution was used as the secondary antibody.Lysate at 35ug per lane.



Formalin-fixed and paraffin-embedded human brain tissue reacted with EXT2 Antibody (Center), which was peroxidase-conjugated to the secondary antibody, followed by DAB staining. This data demonstrates the use of this antibody for immunohistochemistry; clinical relevance has not been evaluated.



Confocal immunofluorescent analysis of EXT2 Antibody (Center) (Cat#TA325104) with hela cell followed by Alexa Fluor 488-conjugated goat anti-rabbit IgG (green). DAPI was used to stain the cell nuclear (blue).



EXT2 Antibody (Center) (Cat. #TA325104) flow cytometry analysis of HeLa cells (bottom histogram) compared to a negative control cell (top histogram). FITC-conjugated goat-anti-rabbit secondary antibodies were used for the analysis.