

## Product datasheet for **TA324967**

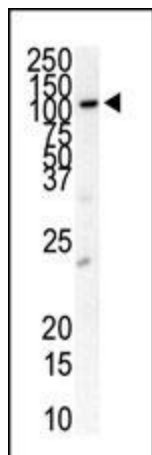
### PDGF Receptor beta (PDGFRB) Rabbit Polyclonal Antibody

#### Product data:

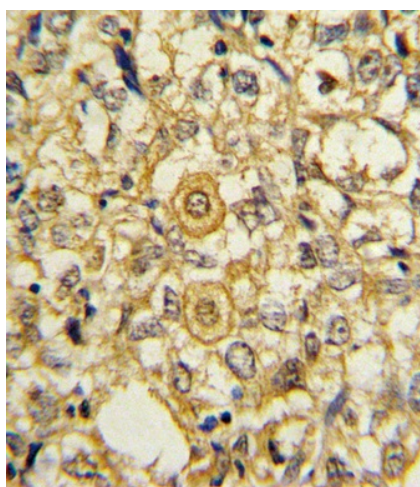
Product Type:	Primary Antibodies
Applications:	FC, IF, IHC, WB
Recommended Dilution:	IHC: 1:10~50, IF: 1:10~50, FC: 1:10~50, WB: 1:1000
Reactivity:	Human
Host:	Rabbit
Isotype:	IgG
Clonality:	Polyclonal
Immunogen:	This PDGFRB antibody is generated from rabbits immunized with a KLH conjugated synthetic peptide between 40-72 amino acids from the N-terminal region of human PDGFRB.
Formulation:	Purified polyclonal antibody supplied in PBS with 0.09% (W/V) sodium azide.
Concentration:	lot specific
Purification:	This antibody is prepared by Saturated Ammonium Sulfate (SAS) precipitation followed by dialysis against PBS.
Conjugation:	Unconjugated
Storage:	Store at -20°C as received.
Stability:	Stable for 12 months from date of receipt.
Predicted Protein Size:	123968 Da
Gene Name:	platelet derived growth factor receptor beta
Database Link:	<a href="#">NP_002600</a> <a href="#">Entrez Gene 5159 Human</a> <a href="#">P09619</a>
Synonyms:	CD140B; IBGC4; IMF1; JTK12; PDGFR; PDGFR-1; PDGFR1
Protein Families:	Druggable Genome, ES Cell Differentiation/IPS, Protein Kinase, Transmembrane
Protein Pathways:	Calcium signaling pathway, Colorectal cancer, Cytokine-cytokine receptor interaction, Focal adhesion, Gap junction, Glioma, MAPK signaling pathway, Melanoma, Pathways in cancer, Prostate cancer, Regulation of actin cytoskeleton



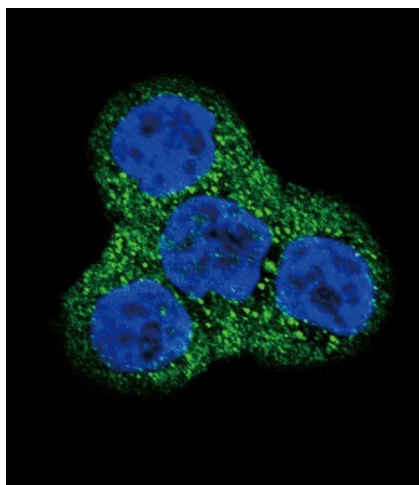
[View online »](#)

**Product images:**

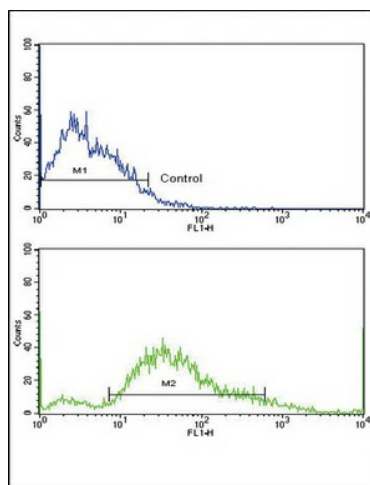
Western blot analysis of anti-PDGFRB Antibody (N-term) (Cat. #TA324967) in cell line lysates (35ug/lane). PDGFRB (arrow) was detected using the purified Pab).



Formalin-fixed and paraffin-embedded human breast carcinoma reacted with PDGFRB Antibody (N-term), which was peroxidase-conjugated to the secondary antibody, followed by DAB staining. This data demonstrates the use of this antibody for immunohistochemistry; clinical relevance has not been evaluated.



Confocal immunofluorescent analysis of PDGFRB Antibody (N-term) (Cat#TA324967) with WiDr cell followed by Alexa Fluor 488-conjugated goat anti-rabbit IgG (green). DAPI was used to stain the cell nuclear (blue).



Flow cytometric analysis of SK-Br-3 cells using PDGFRB Antibody (N-term) (bottom histogram) compared to a negative control cell (top histogram). FITC-conjugated goat-anti-rabbit secondary antibodies were used for the analysis.