

## Product datasheet for **TA324886**

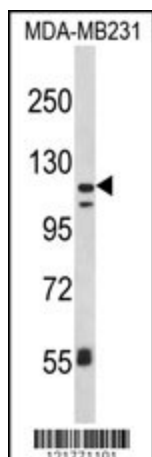
### CD11c (ITGAX) Rabbit Polyclonal Antibody

#### Product data:

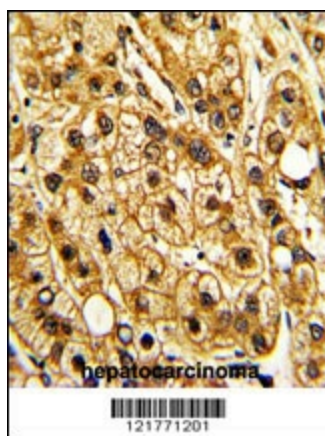
Product Type:	Primary Antibodies
Applications:	FC, IF, IHC, WB
Recommended Dilution:	WB: 1:1000, IHC: 1:50~100, FC: 1:10~50, IF: 1:10~50
Reactivity:	Human
Host:	Rabbit
Isotype:	IgG
Clonality:	Polyclonal
Immunogen:	This ITGAX antibody is generated from rabbits immunized with a KLH conjugated synthetic peptide between 1119-1145 amino acids from the C-terminal region of human ITGAX.
Formulation:	Purified polyclonal antibody supplied in PBS with 0.09% (W/V) sodium azide.
Concentration:	lot specific
Purification:	This antibody is purified through a protein A column, followed by peptide affinity purification.
Conjugation:	Unconjugated
Storage:	Store at -20°C as received.
Stability:	Stable for 12 months from date of receipt.
Predicted Protein Size:	127829 Da
Gene Name:	integrin subunit alpha X
Database Link:	<a href="#">NP_000878</a> <a href="#">Entrez Gene 3687 Human</a> <a href="#">P20702</a>
Synonyms:	CD11C; SLEB6
Protein Families:	Druggable Genome, Transmembrane
Protein Pathways:	Regulation of actin cytoskeleton



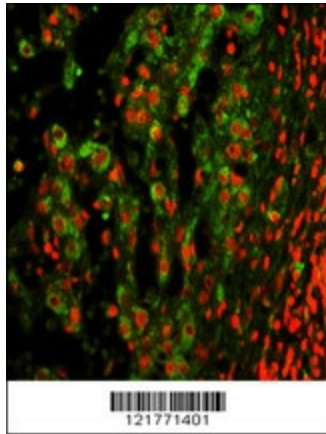
[View online »](#)

**Product images:**

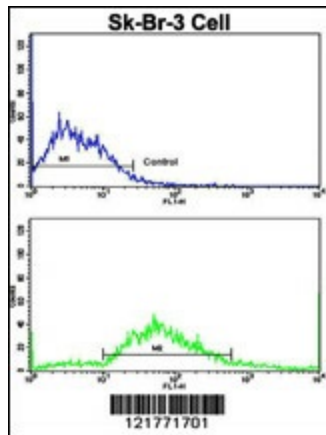
Western blot analysis of ITGAX Antibody (C-term) (Cat. #TA324886) in MDA-MB231 cell line lysates (35ug/lane). ITGAX (arrow) was detected using the purified Pab.



Formalin-fixed and paraffin-embedded human hepatocarcinoma with ITGAX Antibody (C-term), which was peroxidase-conjugated to the secondary antibody, followed by DAB staining. This data demonstrates the use of this antibody for immunohistochemistry; clinical relevance has not been evaluated.



Immunofluorescence analysis of ITGAX Antibody (C-term) with paraffin-embedded human hepatocarcinoma. 0.05 mg/ml primary antibody was followed by FITC-conjugated goat anti-rabbit IgG (whole molecule). FITC emits green fluorescence. Red counterstaining is PI.



Flow cytometric analysis of SK-Br-3 cells using ITGAX Antibody (C-term) (bottom histogram) compared to a negative control cell (top histogram). FITC-conjugated goat-anti-rabbit secondary antibodies were used for the analysis.