

## Product datasheet for **TA324785**

### Her2 (ERBB2) Rabbit Polyclonal Antibody

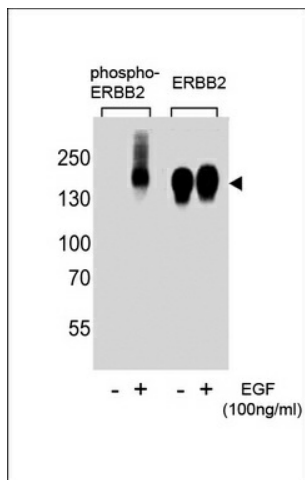
#### Product data:

Product Type:	Primary Antibodies
Applications:	Dot, WB
Recommended Dilution:	WB: 1:4000, DB: 1:500
Reactivity:	Human
Modifications:	Phospho-specific
Host:	Rabbit
Isotype:	IgG
Clonality:	Polyclonal
Immunogen:	This ERBB2 Antibody is generated from rabbits immunized with a KLH conjugated synthetic phosphopeptide corresponding to amino acid residues surrounding Y1139 of human ERBB2.
Formulation:	Purified polyclonal antibody supplied in PBS with 0.09% (W/V) sodium azide.
Concentration:	lot specific
Purification:	This antibody is purified through a protein A column, followed by peptide affinity purification.
Conjugation:	Unconjugated
Storage:	Store at -20°C as received.
Stability:	Stable for 12 months from date of receipt.
Predicted Protein Size:	137910 Da
Gene Name:	erb-b2 receptor tyrosine kinase 2
Database Link:	<a href="#">NP_004439</a> <a href="#">Entrez Gene 2064 Human P04626</a>
Synonyms:	CD340; HER-2; HER2; MLN 19; NEU; neu; NGL; TKR1
Protein Families:	Druggable Genome, Protein Kinase, Transmembrane
Protein Pathways:	Adherens junction, Bladder cancer, Calcium signaling pathway, Endometrial cancer, ErbB signaling pathway, Focal adhesion, Non-small cell lung cancer, Pancreatic cancer, Pathways in cancer, Prostate cancer



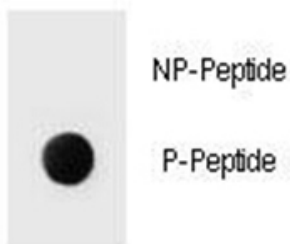
[View online »](#)

Product images:



Western blot analysis of extracts from A431 cells, untreated or treated with EGF, 100ng/ml, using phospho-ERBB2-Y1139 (left) or ERBB2 antibody (right)

P-Pab



Dot blot analysis of Phospho-ERBB2-Y1139 Antibody Phospho-specific Pab (Cat. #TA324785) on nitrocellulose membrane. 50ng of Phospho-peptide or Non Phospho-peptide per dot were adsorbed. Antibody working concentrations are 0.6ug per ml.

Dot Blot