

## Product datasheet for **TA324677**

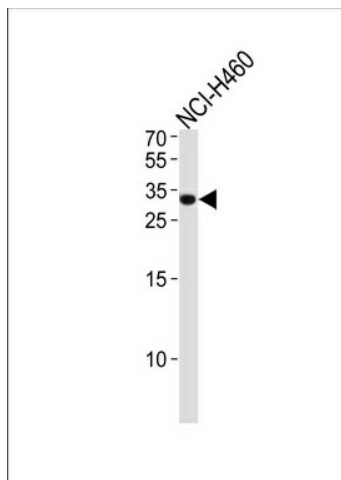
### ASCL1 Rabbit Polyclonal Antibody

#### Product data:

Product Type:	Primary Antibodies
Applications:	WB
Recommended Dilution:	WB: 1:1000
Reactivity:	Human
Host:	Rabbit
Isotype:	IgG
Clonality:	Polyclonal
Immunogen:	This ASCL1 antibody is generated from rabbits immunized with a KLH conjugated synthetic peptide between 63-90 amino acids from the N-terminal region of human ASCL1.
Formulation:	Purified polyclonal antibody supplied in PBS with 0.09% (W/V) sodium azide.
Concentration:	lot specific
Purification:	This antibody is purified through a protein A column, followed by peptide affinity purification.
Conjugation:	Unconjugated
Storage:	Store at -20°C as received.
Stability:	Stable for 12 months from date of receipt.
Predicted Protein Size:	25454 Da
Gene Name:	achaete-scute family bHLH transcription factor 1
Database Link:	<a href="#">NP_004307</a> <a href="#">Entrez Gene 429 Human</a> <a href="#">P50553</a>
Synonyms:	ASH1; bHLHa46; HASH1; MASH1
Protein Families:	Druggable Genome, Transcription Factors



[View online »](#)

**Product images:**

ASCL1 Antibody (N-term) (Cat. #TA324677)  
western blot analysis in NCI-H460 cell line lysates  
(35ug/lane). This demonstrates the ASCL1  
antibody detected the ASCL1 protein (arrow).