

Product datasheet for **TA324552**

Cytochrome P450 2D6 (CYP2D6) Rabbit Polyclonal Antibody

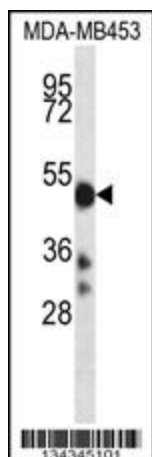
Product data:

| | |
|-------------------------|---|
| Product Type: | Primary Antibodies |
| Applications: | IHC, WB |
| Recommended Dilution: | WB: 1:1000, IHC: 1:10~50 |
| Reactivity: | Human (Predicted: Rat) |
| Host: | Rabbit |
| Isotype: | IgG |
| Clonality: | Polyclonal |
| Immunogen: | This CYP2D6 antibody is generated from rabbits immunized with a KLH conjugated synthetic peptide between 76-105 amino acids from the N-terminal region of human CYP2D6. |
| Formulation: | Purified polyclonal antibody supplied in PBS with 0.09% (W/V) sodium azide. |
| Concentration: | lot specific |
| Purification: | This antibody is purified through a protein A column, followed by peptide affinity purification. |
| Conjugation: | Unconjugated |
| Storage: | Store at -20°C as received. |
| Stability: | Stable for 12 months from date of receipt. |
| Predicted Protein Size: | 55769 Da |
| Gene Name: | cytochrome P450 family 2 subfamily D member 6 |
| Database Link: | NP_000097 Entrez Gene 1565 Human P10635 |
| Synonyms: | CPD6; CYP2D; CYP2D7AP; CYP2D7BP; CYP2D7P2; CYP2D8P2; CYP2DL1; CYP1ID6; P450-DB1; P450C2D; P450DB1 |
| Protein Families: | Druggable Genome, P450, Transmembrane |
| Protein Pathways: | Drug metabolism - cytochrome P450 |

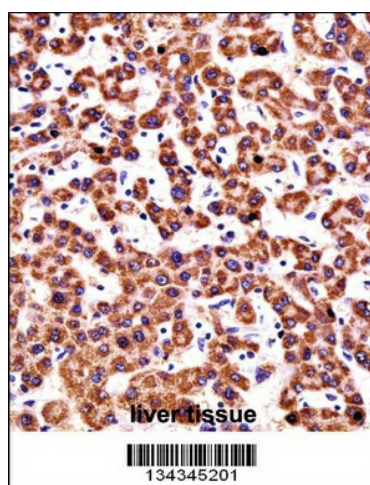


[View online »](#)

Product images:



CYP2D6 Antibody (N-term) (Cat. #TA324552) western blot analysis in MDA-MB453 cell line lysates (35ug/lane). This demonstrates the CYP2D6 antibody detected the CYP2D6 protein (arrow).



CYP2D6 Antibody (N-term) (TA324552) immunohistochemistry analysis in formalin fixed and paraffin embedded human liver tissue followed by peroxidase conjugation of the secondary antibody and DAB staining. This data demonstrates the use of CYP2D6 Antibody (N-term) for immunohistochemistry. Clinical relevance has not been evaluated.