

Product datasheet for **TA324527**

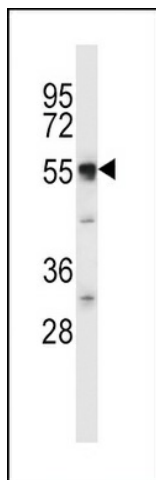
DMT1 (SLC11A2) Rabbit Polyclonal Antibody

Product data:

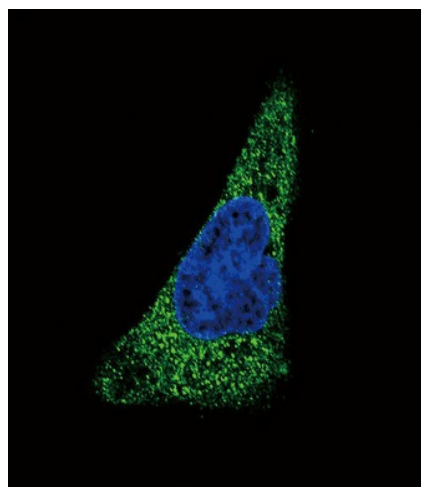
| | |
|-------------------------|---|
| Product Type: | Primary Antibodies |
| Applications: | IF, WB |
| Recommended Dilution: | IF: 1:10~50, WB: 1:1000 |
| Reactivity: | Mouse |
| Host: | Rabbit |
| Isotype: | IgG |
| Clonality: | Polyclonal |
| Immunogen: | This SLC11A2 antibody is generated from rabbits immunized with a KLH conjugated synthetic peptide between 262-291 amino acids from the Central region of human SLC11A2. |
| Formulation: | Purified polyclonal antibody supplied in PBS with 0.09% (W/V) sodium azide. |
| Concentration: | lot specific |
| Purification: | This antibody is purified through a protein A column, followed by peptide affinity purification. |
| Conjugation: | Unconjugated |
| Storage: | Store at -20°C as received. |
| Stability: | Stable for 12 months from date of receipt. |
| Predicted Protein Size: | 62266 Da |
| Gene Name: | solute carrier family 11 member 2 |
| Database Link: | NP_000608 Entrez Gene 4891 Human P49281 |
| Synonyms: | DCT1; DMT1; NRAMP2 |
| Protein Families: | Transmembrane |
| Protein Pathways: | Lysosome |



[View online »](#)

Product images:

SLC11A2 Antibody (Center) (Cat. #TA324527) western blot analysis in mouse cerebellum tissue lysates (35ug/lane). This demonstrates the SLC11A2 antibody detected the SLC11A2 protein (arrow).



Confocal immunofluorescent analysis of SLC11A2 Antibody (Center) (Cat#TA324527) with HepG2 cell followed by Alexa Fluor 488-conjugated goat anti-rabbit IgG (green). DAPI was used to stain the cell nuclear (blue).