

## Product datasheet for **TA324513**

### WNT16 Rabbit Polyclonal Antibody

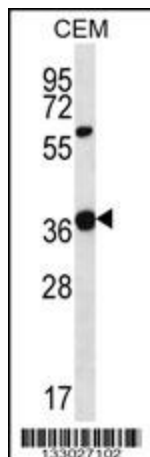
#### Product data:

Product Type:	Primary Antibodies
Applications:	IHC, WB
Recommended Dilution:	WB: 1:1000, IHC: 1:10~50
Reactivity:	Human (Predicted: Mouse)
Host:	Rabbit
Isotype:	IgG
Clonality:	Polyclonal
Immunogen:	This WNT16 antibody is generated from rabbits immunized with a KLH conjugated synthetic peptide between 236-265 amino acids from the C-terminal region of human WNT16.
Formulation:	Purified polyclonal antibody supplied in PBS with 0.09% (W/V) sodium azide.
Concentration:	lot specific
Purification:	This antibody is purified through a protein A column, followed by peptide affinity purification.
Conjugation:	Unconjugated
Storage:	Store at -20°C as received.
Stability:	Stable for 12 months from date of receipt.
Predicted Protein Size:	40690 Da
Gene Name:	Wnt family member 16
Database Link:	<a href="#">NP_057171</a> <a href="#">Entrez Gene 93735 Mouse</a> <a href="#">Entrez Gene 51384 Human</a> <a href="#">Q9UBV4</a>
Synonyms:	member 16; wingless-related MMTV integration site 16; wingless-type MMTV integration site family
Protein Families:	Secreted Protein, Transmembrane
Protein Pathways:	Basal cell carcinoma, Hedgehog signaling pathway, Melanogenesis, Pathways in cancer, Wnt signaling pathway

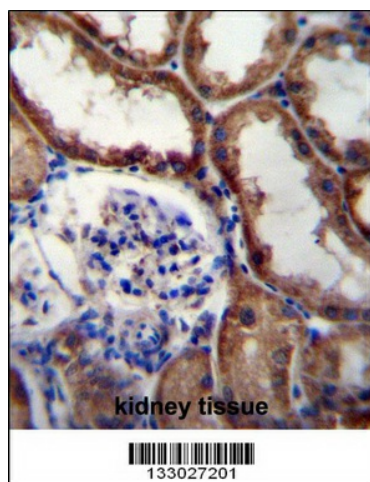


[View online »](#)

## Product images:



WNT16 Antibody (C-term) (Cat. #TA324513) western blot analysis in CEM cell line lysates (35ug/lane). This demonstrates the WNT16 antibody detected the WNT16 protein (arrow).



WNT16 Antibody (C-term) (Cat. #TA324513) immunohistochemistry analysis in formalin fixed and paraffin embedded human kidney tissue followed by peroxidase conjugation of the secondary antibody and DAB staining. This data demonstrates the use of WNT16 Antibody (C-term) for immunohistochemistry. Clinical relevance has not been evaluated.