

## Product datasheet for **TA324500**

### SIX5 Rabbit Polyclonal Antibody

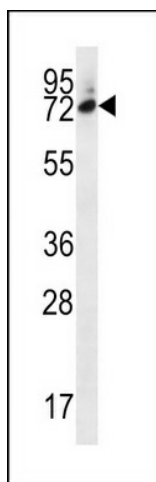
#### Product data:

Product Type:	Primary Antibodies
Applications:	IF, IHC, WB
Recommended Dilution:	WB: 1:1000, IHC: 1:10~50, IF: 1:10~50
Reactivity:	Human (Predicted: Mouse)
Host:	Rabbit
Isotype:	IgG
Clonality:	Polyclonal
Immunogen:	This SIX5 antibody is generated from rabbits immunized with a KLH conjugated synthetic peptide between 257-286 amino acids from the Central region of human SIX5.
Formulation:	Purified polyclonal antibody supplied in PBS with 0.09% (W/V) sodium azide.
Concentration:	lot specific
Purification:	This antibody is purified through a protein A column, followed by peptide affinity purification.
Conjugation:	Unconjugated
Storage:	Store at -20°C as received.
Stability:	Stable for 12 months from date of receipt.
Predicted Protein Size:	74562 Da
Gene Name:	SIX homeobox 5
Database Link:	<a href="#">NP_787071</a> <a href="#">Entrez Gene 20475 Mouse</a> <a href="#">Entrez Gene 147912 Human</a> <a href="#">Q8N196</a>
Synonyms:	BOR2; DMAHP
Protein Families:	Transcription Factors

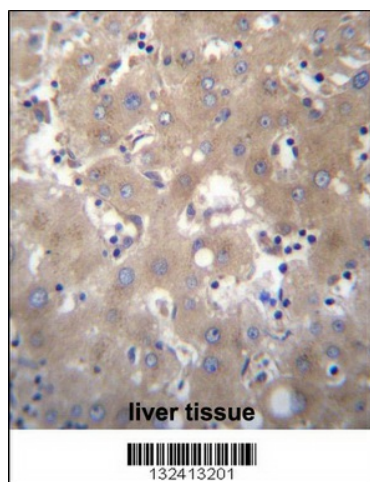


[View online »](#)

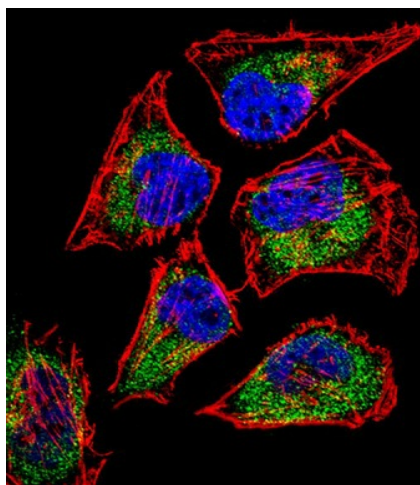
## Product images:



SIX5 Antibody (Center) (Cat. #TA324500) western blot analysis in MDA-MB231 cell line lysates (35ug/lane). This demonstrates the SIX5 antibody detected the SIX5 protein (arrow).



SIX5 Antibody (Center) (Cat. #TA324500) immunohistochemistry analysis in formalin fixed and paraffin embedded human liver tissue followed by peroxidase conjugation of the secondary antibody and DAB staining. This data demonstrates the use of SIX5 Antibody (Center) for immunohistochemistry. Clinical relevance has not been evaluated.



IF image of HeLa cell stained with SIX5 Antibody (Center) (Cat#TA324500). HeLa cells were incubated with SIX5 primary antibody (1:25, 1 h at 37°C). For secondary antibody, Alexa Fluor® 488 conjugated donkey anti-rabbit antibody (green) was used (1:400). Cytoplasmic actin was counterstained with Alexa Fluor® 555 (red) conjugated Phalloidin (7 units/ml). Nuclei were counterstained with DAPI (blue). SIX5 immunoreactivity is localized to Cytoplasm significantly.