

## Product datasheet for **TA324425**

### Nucleolin (NCL) Rabbit Polyclonal Antibody

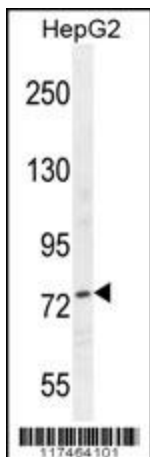
#### Product data:

Product Type:	Primary Antibodies
Applications:	IF, IHC, WB
Recommended Dilution:	WB: 1:1000, IHC: 1:50~100, IF: 1:10~50
Reactivity:	Human (Predicted: Monkey)
Host:	Rabbit
Isotype:	IgG
Clonality:	Polyclonal
Immunogen:	This NCL antibody is generated from rabbits immunized with a KLH conjugated synthetic peptide between 428-455 amino acids from the Central region of human NCL.
Formulation:	Purified polyclonal antibody supplied in PBS with 0.09% (W/V) sodium azide.
Concentration:	lot specific
Purification:	This antibody is purified through a protein A column, followed by peptide affinity purification.
Conjugation:	Unconjugated
Storage:	Store at -20°C as received.
Stability:	Stable for 12 months from date of receipt.
Predicted Protein Size:	76614 Da
Gene Name:	nucleolin
Database Link:	<a href="#">NP_005372</a> <a href="#">Entrez Gene 720965 Monkey</a> <a href="#">Entrez Gene 4691 Human</a> <a href="#">P19338</a>
Synonyms:	C23
Protein Families:	Druggable Genome, Stem cell - Pluripotency
Protein Pathways:	Pathogenic Escherichia coli infection

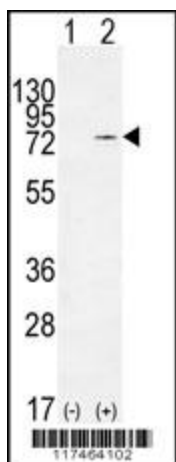


[View online »](#)

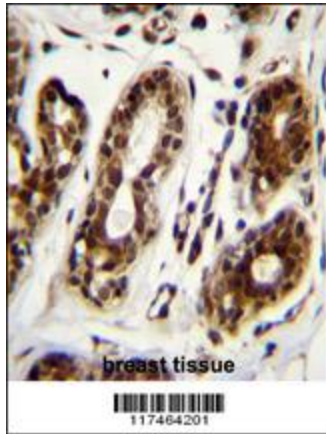
Product images:



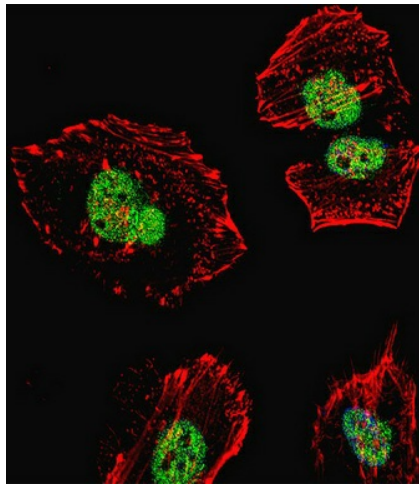
NCL Antibody (Center E443) (Cat. #TA324425) western blot analysis in HepG2 cell line lysates (35ug/lane). This demonstrates the NCL antibody detected the NCL protein (arrow).



Western blot analysis of NCL (arrow) using rabbit polyclonal NCL Antibody (Center E443) (Cat. #TA324425). 293 cell lysates (2 ug/lane) either nontransfected (Lane 1) or transiently transfected (Lane 2) with the NCL gene.



NCL Antibody (Center E443) (Cat. #TA324425) immunohistochemistry analysis in formalin fixed and paraffin embedded human breast tissue followed by peroxidase conjugation of the secondary antibody and DAB staining. This data demonstrates the use of NCL Antibody (Center E443) for immunohistochemistry. Clinical relevance has not been evaluated.



IF image of HeLa cell stained with NCL Antibody (Center E443) (Cat#TA324425). HeLa cells were incubated with NCL primary antibody (1:25, 1 h at 37°C). For secondary antibody, Alexa Fluor® 488 conjugated donkey anti-rabbit antibody (green) was used (1:400). Cytoplasmic actin was counterstained with Alexa Fluor® 555 (red) conjugated Phalloidin (7 units/ml). Nuclei were counterstained with DAPI (blue). NCL immunoreactivity is localized to nucleus significantly.