

Product datasheet for **TA324334**

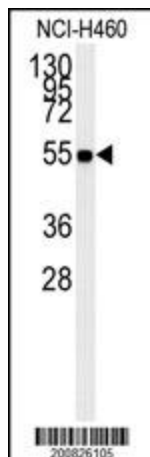
ALDH1A1 Mouse Monoclonal Antibody [Clone ID: 152CT1.2.2]

Product data:

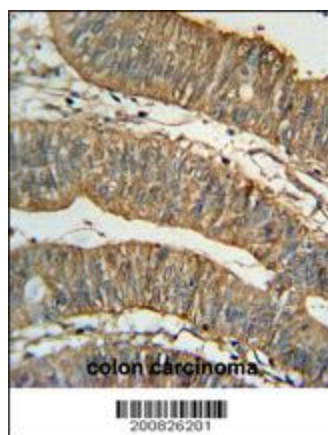
Product Type:	Primary Antibodies
Clone Name:	152CT1.2.2
Applications:	IF, IHC, WB
Recommended Dilution:	IF: 1:10~50, WB: 1:500~1000, IHC: 1:50~100
Reactivity:	Human
Host:	Mouse
Isotype:	IgG1
Clonality:	Monoclonal
Immunogen:	This ALDH1A1 monoclonal antibody is generated from mouse immunized with ALDH1A1 recombinant protein.
Formulation:	Purified monoclonal antibody supplied in PBS with 0.09% (W/V) sodium azide.
Concentration:	lot specific
Purification:	This antibody is purified through a protein G column, followed by dialysis against PBS.
Conjugation:	Unconjugated
Storage:	Store at -20°C as received.
Stability:	Stable for 12 months from date of receipt.
Predicted Protein Size:	54862 Da
Gene Name:	aldehyde dehydrogenase 1 family member A1
Database Link:	NP_000680 Entrez Gene 216 Human P00352
Synonyms:	ALDC; ALDH-E1; ALDH1; ALDH11; HEL-9; HEL-S-53e; HEL12; PUMB1; RALDH1
Protein Families:	Druggable Genome, ES Cell Differentiation/IPS
Protein Pathways:	Metabolic pathways, Retinol metabolism



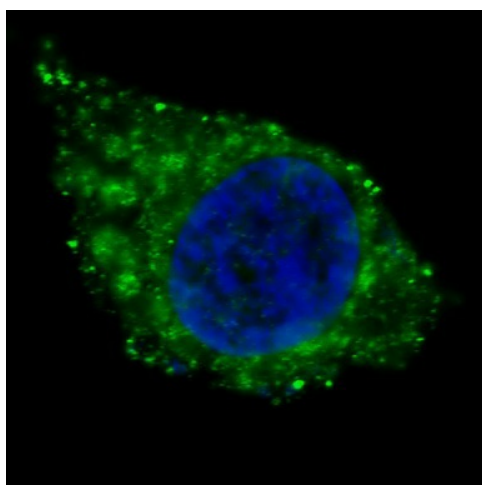
[View online »](#)

Product images:

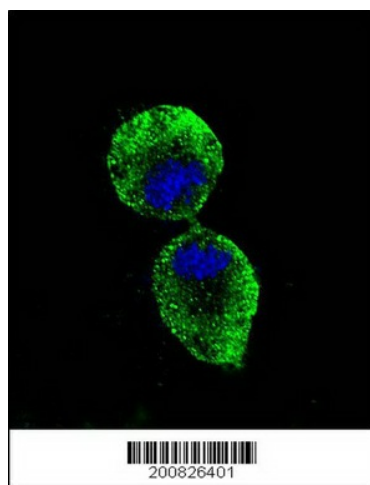
ALDH1A1 Monoclonal Antibody (Cat. #TA324334) western blot analysis in NCI-H460 cell line lysates (15ug/lane). This demonstrates the ALDH1A1 antibody detected the ALDH1A1 protein (arrow).



ALDH1A1 Monoclonal Antibody (Cat. #TA324334) immunohistochemistry analysis in formalin fixed and paraffin embedded human colon carcinoma followed by peroxidase conjugation of the secondary antibody and DAB staining. This data demonstrates the use of the ALDH1A1 Monoclonal Antibody for immunohistochemistry. Clinical relevance has not been evaluated.



IF image of HepG2 cells stained with ALDH1A1 antibody. HepG2 cells were incubated with TA324334 ALDH1A1 primary antibody (1:100, 2 h at RT). For secondary antibody, Alexa Fluor® 488 conjugated donkey anti-mouse antibody (green) was used (1:1000, 1h). Nuclei were counterstained with Hoechst 33342 (blue). ALDH1A1 immunoreactivity is localized to the cytoplasm of HepG2 cells.



Confocal immunofluorescent analysis of ALDH1A1 Antibody (Cat#TA324334) with NCI-H460 cell followed by Alexa Fluor 488-conjugated goat anti-mouse IgG (green). DAPI was used to stain the cell nuclear (blue).