

## Product datasheet for **TA324094**

### PIWIL1 Rabbit Polyclonal Antibody

#### Product data:

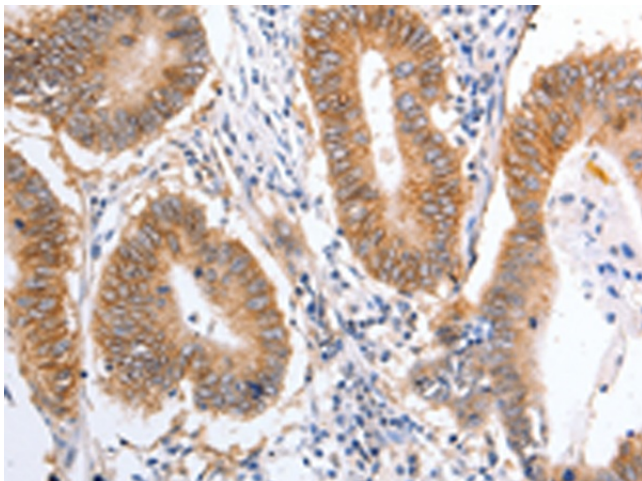
Product Type:	Primary Antibodies
Applications:	IHC
Recommended Dilution:	IHC: 25-100 Positive control: Human colon cancer Predicted cell location: Cytoplasm
Reactivity:	Human, Mouse
Host:	Rabbit
Isotype:	IgG
Clonality:	Polyclonal
Immunogen:	Fusion protein corresponding to a region derived from 555-847 amino acids of human piwi-like RNA-mediated gene silencing 1
Formulation:	PBS pH7.3, 0.05% NaN <sub>3</sub> , 50% glycerol
Concentration:	lot specific
Purification:	Antigen affinity purification
Conjugation:	Unconjugated
Storage:	Store at -20°C as received.
Stability:	Stable for 12 months from date of receipt.
Gene Name:	piwi like RNA-mediated gene silencing 1
Database Link:	<a href="#">NP_004755</a> <a href="#">Entrez Gene 57749 Mouse</a> <a href="#">Entrez Gene 9271 Human</a> <a href="#">Q96J94</a>
Background:	This gene encodes a member of the PIWI subfamily of Argonaute proteins; evolutionarily conserved proteins containing both PAZ and Piwi motifs that play important roles in stem cell self-renewal; RNA silencing; and translational regulation in diverse organisms. The encoded protein may play a role as an intrinsic regulator of the self-renewal capacity of germline and hematopoietic stem cells. Alternatively spliced transcript variants encoding different isoforms have been found for this gene.
Synonyms:	CT80.1; HIWI; MIWI; PIWI



[View online »](#)

Protein Pathways: Dorso-ventral axis formation

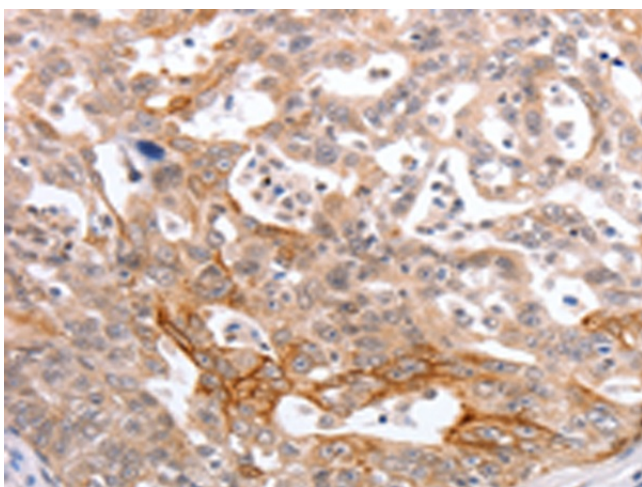
### Product images:



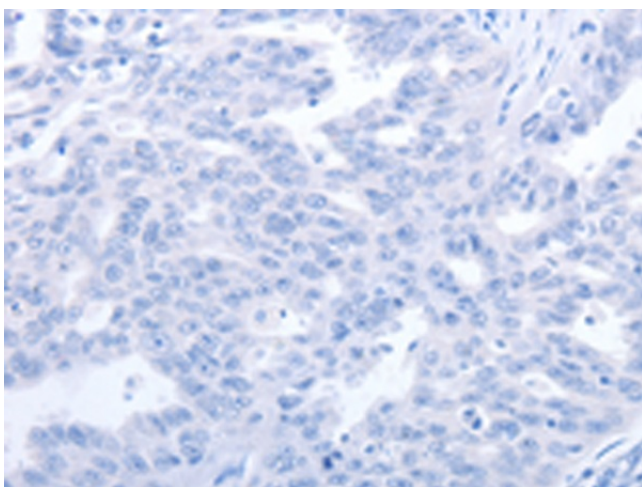
Immunohistochemistry of paraffin-embedded Human colon cancer tissue using TA324094 (PIWIL1 Antibody) at dilution 1/25 (Original magnification:  $\times 200$ )



Immunohistochemistry of paraffin-embedded Human colon cancer tissue using TA324094 (PIWIL1 Antibody) at dilution 1/25, treated with fusion protein. (Original magnification:  $\times 200$ )



Immunohistochemistry of paraffin-embedded Human ovarian cancer tissue using TA324094 (PIWIL1 Antibody) at dilution 1/25 (Original magnification:  $\times 200$ )



Immunohistochemistry of paraffin-embedded Human ovarian cancer tissue using TA324094 (PIWIL1 Antibody) at dilution 1/25, treated with fusion protein. (Original magnification:  $\times 200$ )